

# Rocky Reader

<http://www.rockyreader.com>

## The Monthly Newsletter of the Toledo Gem and Rockhound Club



Volume 53 – Issue 6

June 2015

### President

Tonia Wallace 419-868-9147  
[toniawallace@att.net](mailto:toniawallace@att.net)

### Vice-President

Deb Hoffmaster 517-265-6284  
[debhoffmaster@gmail.com](mailto:debhoffmaster@gmail.com)

### Treasurer

Luanne Harris 419-367-8255  
[luannaharris@gmail.com](mailto:luannaharris@gmail.com)

### Secretary

Mike Mayers 419-885-5613  
[glassman@buckeye-express.com](mailto:glassman@buckeye-express.com)

### Sgt.-At-Arms

Greg Feight 517-605-6720  
[gsfeight@tc3net.com](mailto:gsfeight@tc3net.com)

### Board Members

Harold Burleson 419-704-6662  
[hburl@msn.com](mailto:hburl@msn.com)  
Elie Ghanime 419-450-0160  
[eghanime@buckeye-express.com](mailto:eghanime@buckeye-express.com)  
Kathy Peterson 419-536-6606

### Past President

Steve Shimatzki 419-861-0147  
[sj132@gmail.com](mailto:sj132@gmail.com)

### Show Chairperson

John Capuano 419-882-1733  
[jscapuano@yahoo.com](mailto:jscapuano@yahoo.com)

### Membership (Interim)

Steve Shimatzki 419-861-0147  
[sj132@gmail.com](mailto:sj132@gmail.com)

### Editor

Lyn Kalinoski 419-381-1439  
[tervsrus@bex.net](mailto:tervsrus@bex.net)  
[editor@rockyreader.com](mailto:editor@rockyreader.com)

### Sunshine

Joe Motter 419-691-2783  
[joepat1962@buckeye-express.com](mailto:joepat1962@buckeye-express.com)

### Craft Center

419-531-8124  
<http://rockyreader.com/rrpdfs/>

### President's Message

A huge thank you to all of those who were able to come and share a meal at the May meeting. The food was great, the conversation enjoyable, and... did I mention that the food was great? For our June meeting, Debby has arranged a talk from Dr. Thomas Muntean of the Geology Department at Adrian College. He will speak about Fossils so I know many will not want to miss that program.

Thank you also to everyone who has been willing to take the time recently to share their opinion, either by taking the survey that we currently have online, by attending the Financial Forum meeting this month, or by emailing me privately. We have gotten a ton of feedback on how to keep our club healthy, on ways to bring down costs, raise additional money, and make our Open Houses more enjoyable and more impactful. I shared some of the highlights of the Financial Forum and preliminary results from the survey during our last business meeting (minutes below). We will close the survey down at the end of June and will provide an analysis to everyone in the following Rocky Reader and for discussion at upcoming meetings. The hope is that the results will help us as we make decisions and that it will give a voice to some of you who are less likely to speak up during meetings. If you haven't had a chance to take the survey yet, please take a minute now and do so. It's your club, your money, and our future.

<https://www.surveymonkey.com/r/Y3JLD5K>

Many recent discussions have highlighted the need for a few additional volunteers. First, Ruby Reynolds will not be available to chair the fall Open House. If you are able to help organize, do some advertising, arrange food for the vendors and volunteers, etc., please let me know.

Second, there are many good ideas being bounced around for ways to bring down some of our costs. I need someone who is willing to do some leg work and make some phone calls or send emails to reach out to different venues for our show and/or open houses. This would be a short term commitment, but would require someone who is able to make calls during business hours. If you haven't gotten in the game yet around the club, now is your chance. It is our volunteers who make what we do possible!

See you soon,  
Tonia Wallace, President

## Rocky Reader–June 2015

### Show News:

At the May Open House I operated the geode cracker and had a lot of fun. Both adults and children had a great time cracking geodes open. I need a volunteer(s) to operate the geode cracker for the September show. Please call or email me and tell me you will help.

John Capuano

### June Meeting:

Dr. Thomas Muntean of the Geology Department at Adrian College. Topic is fossils

Announcements: TGRH earned the MICA award at this years MWF meeting. The award was for the biggest increase in Junior Memberships.

### Upcoming Events:

#### Toledo Gem and Rockhound Club Meeting Minutes

Meeting Minutes Date: May 20, 2015

The meeting started with the Pledge of Allegiance.

Tom Marok moved to accept the Secretary's Report as it was printed in the Rocky Reader & Amy Shufeldt seconded and the motion passed

Luanne Harris reported that the transfer of all monies had been completed and that everything was now in Huntington. Tom Marok moved to accept the Treasurer's Report & Linda Maiani seconded and the motion passed

### New Business

Luanne has taken a position with a company in Columbus and will not be able to finish her term as Treasurer. The Board will appoint a replacement at the next board meeting. Tonia will fill in until a replacement is found.

### Old Business:

The updated website is up. We are still in need of additional pictures from members so that we have more variety to choose from. Please check it out and email Tonia if you see any spelling/grammatical errors. The by-laws are no longer on the site. Steve to send out directory this week... he will include by-laws with it and they will be provided to all new members.

Board Meeting last week – made 2 resolutions

Allowed to have classes where the public is invited. Ask for help with a small group to come up with a few ideas.

Resolved to investigate some additional liability insurance specifically for the executive board. Just investigating at this time.

Financial Forum – met last weekend; low attendance. Copies of the agenda that was discussed were provided for pickup for anyone who was interested.

Recap of the Audit, suggestions for improvements, action taken to date, anything we still need help with.

Open House Funding. Including the budgeted amount, November is currently fully funded.

Discussed a potential change in venue or possibility of changing structure of the Open house.

## Rocky Reader–June 2015

Reviewed some of the ideas that have been coming in from the survey. We will leave the survey open for 30 days. Expect an email reminder or find the link in the next RR. Looking for volunteers to investigate several areas.

### Group Reports:

Gemcrafters – (Bonnie) said that training earlier in the week went very well and that 8 new members were trained; Natalie developed a handout, visual aids, etc. Everyone seemed very happy. Next training class scheduled for June, please see Bonnie's note in the Rocky Reader for details.

Faceteers – (Elie) – no report

Metalcrafters (Debby) – 2 classes coming up, not meeting on Father's Day. Steve will be taking over Sundays thru the summer. Debby and Steve will be challenging our members with the Sunday projects.

Beaders (Nancy) – 3rd Monday 6-8pm

Extreme Beaders (Kathy) – Tuesday 9am-3ish

Juniors (Steve) – Continuing cabbing; sent out tumblers with 2 families who are trying those out.

Membership (Steve) – 30 adults / 2 juniors in attendance

Sunshine – Ed Reynolds was not feeling well so he was not at the meeting. Also, Audrey Senghas has a sister who has been seriously ill.

Field trips (Harold) – Field trip to Lafarge, Paulding – joint with Dayton. Show fliers request. May 30th MSHA Class 10am at State Line show. Other potential Indiana trips. Please see Harold for details.

Show (John) – Thanked the following for recent help – Ed Reynolds, Jeff Wheeler, Harold, Sylvia, Nancy. Need volunteers for the show, including people to run the new geode cracking station. We will be putting the volunteer sheet on-line. There was additional discussion about putting an advertisement in Rock & Gem magazine.

Open House – We need a volunteer for the fall open house (tentatively scheduled for November 7-8.) We are currently well funded for fall so we will not be making any changes to the structure of the open house at this time but are considering some changes for spring.

Rocky Reader – Lyn – requested pictures from members.

Gardens (Chet) Volunteer night June 8th at 5:00 PM Listed under things to do. Will need volunteers for Festival of the Arts.

John Kalinoski motioned that we adjourn and the motion was unanimously passed.

Submitted by Tonia Wallace



**Crystals...Minerals  
Cutting Stock.....Tools  
New and Used  
Equipment  
Buying Used Equipment  
and Mineral Collections**

**654 Culley Rd  
Holland, OH 43528**

Owned and Operated by  
Ed and Ruby Reynolds,  
Club members  
By Appointment Only:

**419-337-0041 or 419-340-8801**



## Rocky Reader–June 2015

### GROUPS

#### BEADERS

Monthly Beaders have resumed. Contact Nancy if you are interested..

#### EXTREME BEADERS

Extreme Beaders continue to meet on the weekly schedule, Tuesdays, 9-5, at the Craft Center. Extreme Beaders attendees should be able to work independently and have their own projects, materials and supplies. New attendees interested in Bead Embroidery should contact Shirley Stieb or Kathy Petersen for a materials list, and to schedule initial instruction, if necessary. Extreme Beaders are often working on Thursday afternoons, during Open Gemcrafter days. If interested in beading or instruction during these times, check with Shirley Stieb or Kathy Petersen to verify that beaders will be working that week.

#### FACETEERS

Faceteers have regular meetings the 1st and 3rd Tuesdays of the month at the craft center. Please contact Elie if you have questions.

#### GEMCRAFTERS

**IMPORTANT PLEASE READ:** Safety Reminder - only closed toe footwear is allowed during GemCrafter sessions. It's that time of year again where we need to remind everyone that **sandals, flip flops and other open toe summer footwear is not allowed in the craft center when our equipment is in operation.** Foot and eye protection are required and our safety rules are enforced to protect everyone.

**INTRODUCTION TO CABOCHON CREATION TRAINING:** Our next two training classes are scheduled for **Saturday, June 20** in the craft center. We are offering two time periods to choose from. The first class starts promptly at 10:00 a.m. and ends at 1:30 p.m. The second class starts at 2:30 p.m. and ends at 6:00 p.m. A minimum of 2 members are required to schedule a class time period with a maximum of 4 members per class. First come, first choice of hours. Contact **Natalie Hill** to register for the class. Closed toe shoes and safety glasses required. We supply Petosky stone to create your first cabochon. Upon successful completion of this training you will be free to use all of the basic equipment utilized during the class at future GemCrafter open cutting sessions. See the calendar page of the Rocky Reader for dates and times.

**THANK YOU:** A big thank you to **Ruby Reynolds** and **Carla Burleson** for an outstanding May Open House event!! Thanks also to **Nancy Grove** for the children's beading project both days, **Luanne Harris** for Sunday gem tree making and **John Capuano** for the geode cracking excitement at the entrance. The GemCrafter group appreciates your efforts in making this a great family friendly event.

Your GemCrafter Moderators:

Bonnie Wheeler - Natalie Hill - Greg Feight - Chet King

#### METALCRAFTERS

##### CLASSES

The following schedule is a listing of upcoming classes. To enroll, please make a check out to the Toledo Gem and Rockhound Club and send it to Debra Hoffmaster, 950 Michigan Ave, Adrian, MI 49221

**August 1, 10AM.** Byzantine bracelet. (6 openings) Instructor JoLynne Hall. Fee of \$40.00 to be sent to Debby Hoffmaster and RECEIVED by July 25. Participants in the class will learn to make this classic chainmaille bracelet in color with aluminum rings .

**August 22, 2015 10AM.** Enameling with underglaze (2 openings). Instructor Harriet Nearing. Fee of \$50 to be sent to Debby Hoffmaster and RECEIVED (not postmarked) by March 28. This is an advanced class. Participants must have had previous enameling experience. Students will make a pendant by first chasing a design, then applying liquid underglaze onto the chased lines. A transparent enamel is then sifted onto the dried underglaze and the piece is fired. All materials and tools are provided.

## Rocky Reader–June 2015

**October 17&18. 9AM.** Anodizing Workshop with Bill Seely. (8 openings) Over the course of two days we will learn the basics of anodizing titanium & niobium with Bill Seely, the founder of Reactive Metals Studio. This workshop is underwritten with proceeds from the Metalcraft auction. Find more details and a registration form elsewhere in this newsletter.

*We would like to thank Audrey Senghas for her generous donation to the metalcrafters in honor of her sister, Cheryl.*

### METALCRAFTER MEETINGS

The Metalcrafters will meet June 7, 11 and 25. We will not meet on Father's Day, June 21. Sunday meetings are from 1:30 - 3:30 and Thursday meetings are from 6:30-8:30

We are a collaborative group. We expect that members have their own materials and sufficient experience to work independently. If you are new to silver work, please register for the basic pendant class on March 21. If you are new to the group but have previous experience please e-mail me ([debhoffmaster@gmail.com](mailto:debhoffmaster@gmail.com)) to arrange orientation during a scheduled meeting.

If you are new to the group but have previous experience please e-mail me ([debhoffmaster@gmail.com](mailto:debhoffmaster@gmail.com)) to arrange orientation during a scheduled meeting .

### Third Sunday Project

Steve Shimatzki has kindly agreed to moderate the Sunday sessions for the summer. He has great plans for the third Sunday projects for July and August, however, you will have to wait until then as there is no third Sunday project in June! Please remember, the third Sunday projects are open to any club member.

**Rocky Reader:** deadline is Monday after the meeting for all material. Please send any news, changes to classes or announcements to [editor@rockyreader.com](mailto:editor@rockyreader.com).

### Events From Chetty King's Table:

**June 6-7** Mansfield, Oh Richland Lithic and Lapidary Society, Richland County fairgrounds 10-6 Sat, 11-5 Sun, admission \$5.00. Seniors \$4.00, Children \$3.00. scouts, children under 6 free. speakers, geode breaking, demos FMI 419-562-1152

### June 27-28 TBG Festival of the Arts

**June 26-28**—Bedford, In: Annual show; Lawrence County Rock Club, Lawrence County Fairgrounds; Hwy 50; Fri. 10:00 am-6:30 pm, Sat. 9:00 am-6:30 pm, Sun. 10:00-4:00 pm; Admission is Free!;

**August 1-3** Ishpeming, Mi, Annual show; Ishpeming Rock and Mineral Club, Ishpeming Elks Club; 597 Lake Shore Dr. ; Sat. 9:30 am-4:30 pm; Admission is Free

**August 7-9** Houghton, Mi: Annual show; Copper Country Rock and Mineral Club, Houghton Elementary School; 203 W Jacker Street , (Corner of Bridge and Jackson Streets); Fri. 1:00 pm-8:00 pm, Sat. 10:00 am-6:00 pm, Sun. 11:00 am-3:00 pm; Admission is Free

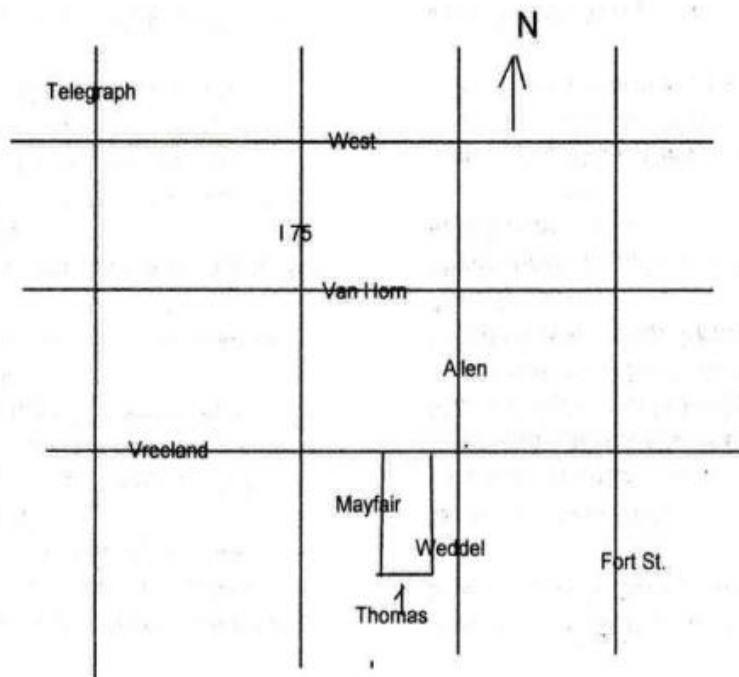
**Please note:** The Michigan Geology and Gemcraft Society, known as MGAGS, regrets to announce that there will be no Rockhound weekend in 2015 and, further, the organization is in the process of dissolving. We know many people enjoyed attending this somewhat unique event over the years and we enjoyed organizing it. We look forward to meeting our friends at other events across the Federation. MGAGS Board of officers

# MMLS ROCK AND MINERAL DRIVEWAY SALE

AT 20281 THOMAS, BROWNSTOWN TWP.  
MICHIGAN

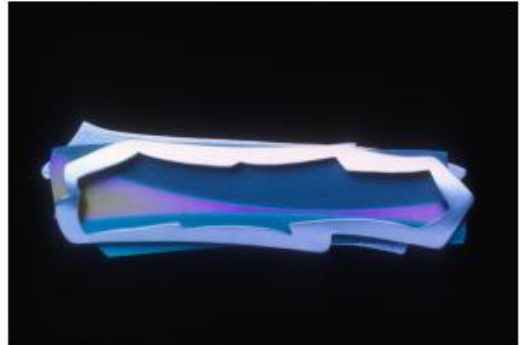
**JUNE 20, 2015 FROM 10AM  
TO 5PM**

We will have lapidary rough, minerals and lapidary equipment for sale.  
For more information email: [dpkuzara@peoplepc.com](mailto:dpkuzara@peoplepc.com)  
or call 734-675-5237



Workshop: Working with Reactive Metals: October 17&18.

We will learn the basics of anodizing titanium & niobium. We will investigate masking & selective removal techniques in anodizing. Using your favored techniques we will cold work these metals to produce samples & 3d objects. The goal is to integrate these metals and the broad array of colors into your favorite materials, techniques and designs.



© Bill Seely

Fees for the two-day workshop include instruction and brunch for both days. An additional \$60 for materials (niobium sheet, wire & masking) is payable to Reactive Metals Studio at the workshop. The anodizers used during the workshop will be available for purchase at a discount. Anodizers may be pre-ordered at the same discount and will be delivered. No shipping!

This workshop assumes the participants are confident on the skills of sawing, filing, drilling, forging and annealing. Familiarity with fold forming, chasing/repousse and patterning are a plus. Participants are expected to bring the following to class: an Exacto knife, a Metal straight edge, an Ultra Fine Sharpie, and your favorite of the following: flex shaft bits for texturing, materials for roll printing, and forging, forming & texturing tools.

Bill Seely is the founder of Reactive Metals Studio. He has pioneered the use of the reactive metals in jewelry and the arts since 1979. More examples of work in the reactive metals may be seen at: <http://www.reactivemetals.com/Gallery.html>

**If you wish to receive the early registration discount and club support discount, you must register and pay by August 1, 2015.**

To register - send this form, plus payment (check made out to Toledo Gem and Rockhound Club) to:  
Debra Hoffmaster  
950 Michigan Ave  
Adrian, MI 49221

NAME: \_\_\_\_\_

FULL CLASS COST:	\$300.00
<input type="checkbox"/> Early Registration prior to August 1	-\$100.00
<input type="checkbox"/> Discount for working at the Club Show (to volunteer, contact Deb Hoffmaster)	-25.00
<input type="checkbox"/> Admissions	
<input type="checkbox"/> Raffle	
<input type="checkbox"/> Club Sales	
<input type="checkbox"/> Kid's Games	
<input type="checkbox"/> Kid's Kits	
<input type="checkbox"/> Gem Trees	
<input type="checkbox"/> Touch & Feel	
<input type="checkbox"/> Set up/Tear down	
<input type="checkbox"/> Discount for materials donated to the Metalcrafter Auction.	-\$25.00

Total enclosed \_\_\_\_\_

<b>Thelma Postlewaite's Family News June Birthdays:</b>	
1	Harry Snodgrass
2	Beth Carson Adam Schmidt
3	Kimberley Erdman
7	Linn Peterson
8	Coleen Shaw
11	Ron Dover
15	Tom Hutchinson
19	Linda Maiani
24	Savanna Brown Christine Jones
25	Gene Wallace
<p><b>Don't forget to check your Driver's License.</b></p>	

**Your Local Source!**

tools•equipment•solders•fluxes•sawblades•hammers•optics  
mallets•benches•displays•adhesives•torches•flexshafts

---



#0326 **GEMORO PRODUCTS** **Steamer**  
The Sparkle Experts

**The Brilliant Spa**  
8oz capacity  
50 PSI pressure  
Great for cleaning jewelry  
**Only \$54.95**

---

**Wm. S. McCaw Company**   
  


1722 Madison Ave. Toledo, OH 43604  
419-243-3720 800-537-0343  
Fax 419-243-0321 800-245-6481  
info@mccawcompany.com  
www.mccawcompany.com

**Bench Tips by Brad Smith** Get all 101 of Brad's bench tips in "Bench Tips for Jewelry Making" on Amazon <http://amazon.com/dp/0988285800/>

Most jewelers treat motorized equipment with caution. We've all heard stories about workpieces coming loose in the drill press or about getting long hair or clothing caught in the polishing machine. It stands to reason that a machine with a motor of a half horsepower or so is going to win out over its operator. We all know that, and I'm not going to harp on it. That's not the point of this story.

I want to talk about the smaller motor powered machines we often use, the ones with little 3 inch diameter motors. For instance, these small motors are used in flexshafts and micro buffers. They're so small that many of us forget caution when using them. I'm guilty of it myself sometimes, and believe me it can get you in trouble. Here's what happened to two people I know.

One friend had a polishing bur bend in the handpiece and then whack the thumb that was holding the workpiece so badly that it seemed the bone might be broken. The swelling was substantial, and it took several weeks to regain normal use. A small underpowered motor? I don't think so.

Another friend was using one of the small buffing machines, the kind you can stop when you apply too much pressure to the wheel. Not to worry about such an underpowered beast you say. Wrong, it literally jumped up and bit the hand that feeds it !

Buffer was set on a low table to do a quick polish, so was not mounted or clamped. A buff was installed on the right spindle, no buff on the left. Friend was wearing a tight-fitting, long-sleeved sweater. While buffing on the right wheel, the left tapered spindle caught a thread on the friend's left sleeve and started grabbing more and more threads and sleeve.



## Rocky Reader–June 2015

Rather than pulling the arm into the machine, the light buffer quickly lifted off the table and started climbing up the underside of the friends arm. There was no way to get a hand of the on/off switch because the unit was spinning wildly and battering my friend like a club wielded by a mad man. Only when my friend could grab the gyrating power cord and yank it from the wall did the mayhem stop.

So when you're in the shop, please think safety. Don't take even those little motors for granted.

### Juniors Corner

#### **MINERALS NAMED AFTER PEOPLE**

In this word search you will find the names of minerals that are named after people. Some of these people are famous, some are not. After you find the names, look them up on the internet and write down the full name of the person. You can even write a biography about each person.

The names go left to right, right to left, top to bottom, bottom to top and diagonally.

C	O	L	E	M	A	N	I	T	E	D	W	E	U	B
L	E	T	I	L	E	D	N	O	R	F	W	A	L	A
E	H	A	N	N	A	E	T	I	A	N	A	D	E	B
A	N	D	R	A	D	I	T	E	O	R	R	T	X	I
V	E	N	G	L	I	S	H	I	T	E	D	V	I	N
E	F	O	R	S	T	E	R	I	T	E	I	P	T	G
L	W	E	S	A	D	A	M	I	T	E	T	R	E	T
A	S	E	D	F	K	U	N	Z	I	T	E	T	N	O
N	I	T	D	O	C	O	V	E	L	L	I	T	E	N
D	B	I	L	K	S	P	R	E	H	N	I	T	E	I
I	G	T	S	H	M	I	C	A	R	A	C	I	M	T
T	U	O	U	B	I	N	D	O	L	O	M	I	T	E
E	T	I	M	U	H	V	B	R	U	C	I	T	E	L
M	M	B	Y	E	T	I	D	N	A	R	T	R	E	B
S	I	L	L	I	M	A	N	I	T	E	F	U	N	P

Adamite, Andradite, Babingtonite, Bertrandite, Biotite, Bornite, Brucite,  
Cleavelandite, Colemanite, Covellite, Danaite, Dolomite, Englishite, Forsterite,  
Frondelite, Humite, Kunzite, Prehnite, Sillimanite, Smithsonite, Ulexite, Wardite

The Gallery

Chris Jones: work in progress

Pendant centerpiece detail



## The Garden After Dark



A unique and once in a lifetime experience to see the Garden like never before, featuring multimedia entertainment witnessed only at this night-time event! The inaugural year for an event will invoke curiosity and provide a guest experience unlike any other in Toledo.

Projection Installations by University of Toledo Art Department and the WORK Collective, performances by Birds Eye View Circus, DJ Rob Sample and the Toledo School for the Arts Steel Drum Corps. Quench your thirst with craft beers by Maumee Bay Brewing and botanically inspired cocktails by the Village on Adams.

**The event has been rescheduled to Friday, June 26 from 10pm-1am immediately following the Crosby Festival of the Arts Gala Preview Party (6-10pm)!**

**Ticket price is \$15 per person.**

***Tickets can be purchased online. <http://www.toledogarden.org/events/garden-after-dark-2015>***

***Tickets for the Crosby Festival of the Arts Gala Preview Party can be purchased separately online or by calling 419.536.5566***

*Parking will only be available at the Natural Science Technical Center parking lot next to the Garden on Elmer Drive.*

Don't Forget:



Crosby Festival of the Arts Full Hours:

- [Friday, June 26: 6pm-10pm \(Preview Gala\)](#)
- [Saturday, June 27: 10am-6pm](#)
- [Sunday, June 28: 10am- 4pm](#)

Volunteer at: 419-536-5592 or email [nikki.eggerstorfer@toledogarden.org](mailto:nikki.eggerstorfer@toledogarden.org)

## Rocky Reader–June 2015

### June 2015

Sunday	Monday	Tuesday	Wednesday	Thursday	Friday	
	1	2 Extreme Beaders 9am	3 Gemcrafters 6:30-9:30	4 Gemcrafters 12pm	5	6
7 Metalcrafters 1:30	8	9 Extreme Beaders 9am Faceteers 7pm	10 Gemcrafters 6:30-9pm	11 Gemcrafters 12pm Metalcrafters 6:30 pm	12	13
14	15 Beaders 6pm-8pm	16 Extreme Beaders 9am	17 Club meeting 7pm talk on fossils	18 Gemcrafters 12pm	19	20 Gemcrafters cabochon class 10:00-1:30 2:30-6:00pm
21 Fathers Day: No Metalcrafter meeting	22	23 Extreme Beaders 9am Faceteers 7pm	24 Gemcrafters 6:30-9:30	25 Gemcrafters 12pm Metalcrafters6:30 pm	26	27
28 Juniors 1:00pm	29	30 Extreme Beaders 9am				

Group meetings and classes at the clubhouse are for members only. Our club meetings are at the TBG Crosby Conference center, 5403 Elmer Dr. Toledo and are open to the public on the third Wednesday of every month. To learn more about our club, visit us during our Open House held every May and November.



  
**Rocky Reader Editor**  
**Lyn Kalinoski**  
**4868 Eastwick**  
**Toledo OH 43614**