



The Rocky Reader

The Monthly Newsletter of The

Toledo Gem and Rockhound Club

Volume 57, Issue 4

April 2019

Message from the President

Dear Club Members,

At the March meeting, we had a wonderful time hearing the presentation given by Michelle Gregore. Once again, Thank you Michelle! At our next meeting, you will be updated to changes with the Mid West Federation bylaws, an update on the AFMS and ALAA, from the conference that Ron Miller and I had attended. We will also be having the Gem Crafter's auction. So, if you have anything to contribute, please bring it to the next meeting or drop it off at the Craft Center! The Gem Crafters would greatly appreciate it. If you have to leave the meeting early, before the auction is over, please let me know so I may be your "proxy". This way, you won't miss out on possibly getting items you wish to purchase.

On another note, I am still looking for someone to step up to become the our club Sunshine. This person would be in charge sending out cads to ill members and report info on those members at the meetings, report any deaths of past members and send out sympathy cards to their family. You will also be responsible for writing a report for the Rocky Reader giving information on all sicknesses, deaths, and other happenings of members. Please call me if you are interested.

I hope to see you at our next meeting to be held at the Toledo Botanical Gardens on April 17th at 7pm in the Toledo Artists Club building.

Keep on rocking!

Catherine Clevenz, President

Spring Open House

The Spring Open House Show and Sale is scheduled for April 27th and 28th. at St. James Lutheran Church on W. Sylvania Avenue in Toledo, Ohio. Tina Mitten will once again chair this event with the assistance of Meg Barnhizer. You may contact Tina by sending her a TXT message to [\(419\) 810-2993](tel:4198102993) or Meg at [\(419\) 885-0848](tel:4198850848).



PRESIDENT

Catherine Clevenz

clevenz@gmail.com

419-340-5276

VICE-PRESIDENT

Peggy Argabright

ptoepher@yahoo.com

TREASURER

Glen Toepfer

gwtoepfer@cqasolutions.co

419-460-0846

SECRETARY

Katherine Smarkel

pixelusprime@gmail.com

419-708-0925

SERGEANT.-AT-ARMS

Chet King

419-841-4272

cljking@accesstoledo.com

BOARD MEMBERS

Mike Mayers

glassman@bex.net

419-343-6730

Meg Barnhizer

superscouts@bex.net

419-885-0848

Kathy Petersen

mrlrlyt@AOL.com

419-536-6606

MEMBERSHIP CHAIR

Steve Shimatzki

FIELD TRIP CHAIR

Kealy Goodall

SHOW CHAIR

Steve Shimatzki

sjs132@gmail.com

419-861-0147

OPEN HOUSE CHAIR

Tina Mitten

mittalk64@gmail.com

(419) 810-2993

EDITOR - ROCKY READER

Tom Barnhizer

Superscouts258@gmail.com

(419) 381-4418

The Toledo Gem and Rockhound Club News.

April 2019

Craft Center Spring Cleaning

The Craft Center underwent an initial clean-up last week. Most items that were affected were either moved to our new storage locker or relocated within the Center. As we move into Spring there will likely be some additional cleaning that will be required. Once a new list has been developed volunteers will once again be needed. Thanks in advance for stepping up.

Outreach / Presentations:

Our thanks goes out to Michelle Gregorie who made an awesome presentation on her vacation travels through S. Dakota, Colorado and Arizona at our March meeting. In addition, Michelle brought in some specimens and answered questions on where to hunt and Rock Shops to visit if you ever in the region.

For those members in attendance I hope that you were able to select one of the specimens of "Yellow Dog" Peridotite, brought in by Dr. Quentin Skarbek, to add to your collection. He had previously written about it in our January issue. Yellow Dog, if you remember, is specific to the Keweenaw Peninsula of Upper Michigan and according to Dr. Skarbek is the reason we find so many false signals or indications of metallic minerals when prospecting with a magnet or metal detector. An information sheet was also provided as an aid to our Rockhounds. Thanks Doc.

New Group Proposed:

It has been suggested that we reform the Rockhound Group for those members who would like to prospect, collect, identify, display and trade/swap naturally occurring rock and mineral specimens including common rocks, fossils, metallic ores, gems, meteorites and semi-precious stones. An initial meeting of interested members is set for April 5th at 5 pm in the Craft Center to form this Group and develop a program.

Craft Center Fees

It should come as no surprise then that the Club requires its members to support it's use through fees. Fees are collected on an honor system and based upon how often and how long each member uses the Center. We hope that you will come to the Center as often as you like to work on your projects and not forget to contribute your fees each time you do. Thank you.

April Meeting Announcement

The next general meeting of the Toledo Gem and Rockhound Club will be held in the TBG Artist's Club's Studio on April 17th at 7 pm.

Officer Vacancy.

Kealy Goodall has indicated her interest in filling the position of Field Trip Coordinator. The FTC's principal duty is to prepare for and coordinate field trips for the benefit of our members. We look forward to Kealy's program ideas in the year ahead.

Access to the Garden

With Summer right around the corner our hours of daylight are growing longer. we can enter the park via the Main Gateway entrance or the Olympia Drive entrance which is between the main gate and the Education Center. You may use the parking lot by our Craft Center if space is available or choose to park in the Garden. As a reminder, the last one out after sunset should close and lock the gate access to the Craft Center Parking area.

Metroparks Events & Volunteer Opportunities

New Garden Ambassadors Toledo Botanical Garden & Wildwood

This new volunteer assignment will help with scheduled tours of the gardens by welcoming tours, getting the guests started on self-guided tours, answering questions about the gardens, and assisting with garden bed identification. Please contact Kelly at kelly.griffin@metroparkstoledo.com with questions or for information on our upcoming training in April.

For specific questions about volunteering at any of our Metroparks call Trish Hausknecht at (419) 407-9703. Make sure to let them know that you are affiliated with the Rock Club. You can register as a volunteer on the Metro parks webpage at www.metroparkstoledo.com/get-involved/volunteer/ In addition, when you volunteer at least 15 hours of your time you can purchase a Metroparks membership at half price.

The Olander Parks Fossil Digging Quarry opens at Fossil Park on April 15th.

The 2019 MWF CONVENTION

March 23-24 was the 2019 Midwest Federation of Mineralogical and Geological Societies Convention in Cedar Rapids, Iowa. The Convention was hosted by the Cedar Valley Rocks and Mineral Society. Catherine Clevenz represented our club at the convention as a Delegate along with Ron Miller. Catherine has accepted appointment to chair the Midwest Federation's Environmental Legislation committee. If you are interested in attending the 2020 MWF Convention which will be hosted by the Livingston Mineral Society you can check out the MWF webpage at <http://www.amfed.org/mwf/convention/convention.html> for future updates.

The Annual Toledo Gem and Rockhound Show.

Planning has begun for the 48th Annual Toledo Gem and Rockhound Show at the Stranahan Convention Center on Heatherdowns Blvd. in South Toledo. Show Chair, Steve Shimatzki and his wife, Suzanna have a quantity of this year's promotional flyer which in the form of a postcard. The Show Dates in 2019 are Sept. 6, 7, and 8th with set-up on Sept. 5th. Steve will be forming a committee with committee chairs aided by volunteers to help out and most especially a loading and clean-up crew to prep the Stranahan Convention Center prior to the event and tear down on the final day. Club members should begin to plan for any displays that will be voted on by the visiting public. Also Steve would like to invite members to donate generously to the annual raffle. If you have any new ideas for the show or would like to volunteer to staff one of the many work stations, demonstrations or presentations that are planned please contact Steve or Sue at sjs132@gmail.com as soon as possible.

2019 Spring Open House Event:

The Spring Open House is scheduled for April 27th and 28th while The Fall Open House is scheduled for November 2nd and 3rd. Please make note of these dates on your calendar. Both Open House Show and Sales will be held at St. James Lutheran Church on W. Sylvania Avenue in Toledo, Ohio. Tina Mitten will once again chair these events with the assistance of Meg Barnhizer. More information as to table reservations and other details you may send Tina a TXT message to her phone at **(419) 810-2993**. See the attached Spring Open House Flyer.



FIELD TRIPS:

Club member, Dr. Quentin Skarbek would like to invite Club members to tour selected areas of the Toledo Art Museum with a focus on rocks, minerals and geology. This tour will be open to all Club members including Future Rockhounds. Should you be unable to participate in the above field trip we hope that you will consider visiting the Museum on your own this year. The Museum's hours of operation are Tuesday and Wednesday: 10 a.m. - 4 p.m., Thursday & Friday: 10 a.m. - 9 p.m., Saturday: 10 a.m. - 5 p.m. and Sunday: noon - 5 p.m.. Admission is FREE. Parking is \$7 (FREE to Friends of the Museum members).

Our President, Catherine Clevenz announced that the Club is planning a Mid- May Field Trip to Michigan's UP to collect Lake Superior Agates and other rock and mineral specimens including native Copper. The planned date of this trip is May 17th through the 19th however we have yet to set a time and itinerary. Should any member elect to organize a field trip they should contact the Club President with information on the activity including planned dates and times

Donations:

The Club was recently the beneficiary of a large rock and mineral collection from Fred and Margaret Peterson most of which was placed in the Metalcrafters Auction to benefit the Club programs.

Franks Rocks of Morenci, Michigan gave the Club some faux Turquoise from China and some dyed Moonstone from India that we can use in our education and outreach programs.

Jim Sherock has donated two Faceting Machines to the Club. The goal is to make these available to members for training and Gem crafting sessions in the Craft Center.

The **World of Rocks of Ypsilanti, Michigan** donated several boxes of mixed materials to our Future Rockhound of America Program. Our Juniors will use them to learn how to ID different rocks and to add to their own specimen collections.

If you have tools, machines or other lapidary materials and have been thinking of donating items to the Club please call or e-mail any of our Club Officers listed above for information.

TGRC Lapidary Corner Market

SOLD: Raytech Facetter; Asking \$295.00 The machine is in great condition and comes with a 600 and 240 grit disc. **Contact:** Ken Hays – Sylvania, OH 419-280-6774

FOR SALE; Misc Slabs.

Ken and Beverly of Arlington Ohio have over 100 kinds of slabs . Agates, Jasper, Flint, Sodalite, Rhodnite, Thundereggs, etc. Reasonable prices. Take one or take all. CALL 419-694-4203 and ask for Kenneth. He can give you directions to get here but call before you plan to come. PLEASE LEAVE A MESSAGE ON THE MACHINE IF NO ANSWER. We will call you back. THANKS

Wanted: 42"-50" screen HDTV with an **HDMI** input port. If you have upgraded or enlarged your High Definition TV lately and have an old one just taking up space Call (419) 381-4418.

GEMCRAFTERS

December 2018 Gem Crafter Update:

Training Sessions: To learn the correct steps to make a quality cabochon or how to use the Slab Saws and other lapidary equipment. Please contact Joanna Toepfer, Chet King or Elie Ghanime if you would like to participate in any upcoming training session. Introduction to Gem Crafters Classes are scheduled as needed. To participate in any of these beginning classes let Joanna or Chet know of your interest as soon as possible.



The April Cabochon of the Month is Unakite.

Unakite is a pink and pistachio-green granitic gem material of an altered granite composed of pink orthoclase feldspar, green epidote, and generally colorless quartz. These colors have helped it become a popular lapidary material. It is easily cut and polished to produce beads, cabochons, small sculptures, and other ornamental items. Unakite is sometimes used as an architectural and decorative stone. Slabs of Unakite are used as flooring tiles, facing stone, stair treads, and windowsills. Its most prominent use is as a trimming to the front steps of the Smithsonian National Museum of Natural History in Washington, D.C. In jewelry projects, Unakite works best in pieces that will not be subjected to abrasion or impact.

Its most prominent use is as a trimming to the front steps of the Smithsonian National Museum of Natural History in Washington, D.C. In jewelry projects, Unakite works best in pieces that will not be subjected to abrasion or impact.

Open work sessions:

Saturdays; 2nd, 3rd and 5th Saturdays from 9am to 4pm with Joanna Toepfer moderating.

Wednesdays: April 3, 10, 17 and 24th from 6 to 9 pm with Chet King moderating.

Thursdays: April 4, 11, 18 and 25th from noon to four pm with Chet King moderating.

Needed: Members to maintain/clean equipment: The club needs members who are willing to clean and repair gem crafter equipment at the Craft Center. Recently, Michelle Grigore spent a considerable time to clean many of the machines that members use. To have working saws, cooling systems and grinders along with a comfortable, safe working space when you come in, please step up and help out. Thank you in advance for your assistance. See Joanna Toepfer, Cathy Clevenz, or Chet King for more details or to volunteer.

Gem Crafter Moderators: Thanks to Joanna Toepfer and Chet King. Should any member be interested in becoming a Moderator please contact Joanna Toepfer joanna@cqasolutions.co who is looking into setting up a Moderator Training Course.

Gemcrafters Chair Fund:

Gemcrafters has begun a fund to purchase several adjustable swivel office chairs to replace the existing metal folding chairs. If you've ever had to sit on one of the folding chairs for more than an hour you know how much these new chairs will improve your work session. Donations have already started to come in from members to be used to purchase 3-4 chairs that will be used in our Cabbing Area. If you are interested making a donation you may place your cash or check in a marked envelope and leave it in the Craft Center for deposit into this temporary fund. Thank you in advance for your generosity.

FACETERS:

Intro to Faceting Class Cancelled.

Elie Ghanime had planned to teach an **Intro to Faceting** Class from Saturday, March 23rd, continuing through Sunday the 24th, 2019 in the Toledo Gem Craft Center. This class, which was to cover technical/design aspects and include a hands-on Faceting Machine session was cancelled due to

insufficient interest. While two members did sign up, it is necessary to have a minimum of 10 individuals to conduct classes of this nature.

In addition, Chet King is open to additional members signing up for a hands-on weekend faceting classes in the craft center.

METAL CRAFTERS

If anyone is still interested in another class on Fire Enameling, please let me know and we can get another class scheduled. I also would like to invite everyone to come to open sessions. I can help with or give some direction on any project that you would like to do. I can make myself available so please email me at bking3@me.com.

Brian has changed his schedule in the new year and will now be available Wednesday evenings at 6:00 pm and alternating Saturdays for Weekend Open Sessions. For the month of April Metalcrafters will meet on the 1st and 3rd Saturdays. Please email Brian at bking3@me.com if you would like to attend so he can have the facilities ready.

BEADERS:

TGRC Beaders will meet on the third Monday of the Month at 6PM. If you are interested in beading, contact Nancy Grove nancy7536@att.net for more information.

ADVANCED BEADERS:

The "Extreme" or Advanced Beaders meet on Tuesdays beginning 9AM to 4PM. Participants should be able to work independently on their own projects. If you would like to join, but need more information, contact Kathy Petersen mlrlyt@AOL.com

SUNSHINE: No Report.

TRGC Future Rockhounds Of America:

We held our March meeting of the FRA at the King Road Branch of the Sylvania Library. Juniors participated in hands-on projects to learn more about fossils in preparation for our upcoming Field Trip to Fossil Park in May. In February Juniors were excited to learn how to make a record in the rocks by creating their own Petroglyphs. Each junior took home a small bag of rocks and mineral specimens to add to their own collection. In April we will participate in the Spring Open House event.

The FRA Club will continue to meet at the Craft Center on the 4th Saturday of each month from 2-4 pm accompanied by a parent or guardian. We may also meet in other locations that may better support our program. At each session Future Rockhounds will learn about rocks and minerals as in the past and in addition geology, geography, chemistry and physics. Each youth will complete age appropriate activities to earn patches and pins as they demonstrate their knowledge. Within the FRA program they will learn how to organize their collections, help with shows, make presentations, participate in field trips and demonstrate leadership. FRA is geared to appeal to youth from 1st grade to high school Seniors.

April Events and Regional Shows

4-6: WYOMING, MI Indian Mounds Rock & Mineral Club 44th Annual Gem & Mineral Show. Thur 9:30 am - 9 pm; Fri 9:30 am - 9 am; Sat 9:30 am - 7 pm. Rogers Plaza Town Center, 972 - 28th St., Wyoming. Contact: Kreigh Tomaszewski, (616)243-5851; kreigh@gmail.com www.indianmoundsrockclub.com

13-14: COLUMBUS, OH Columbus Rock & Mineral Society Annual Show. Sat 10 am - 6 pm; Sun 11 am - 5 pm. Northland Performing Arts Center, 4411 Tamarack Blvd., Columbus. Contact: Craig Kramer, (614) 436-4511; show-info@columbusrockandmineralsociety.org www.columbusrockandmineralsociety.org

27-28: CUYAHOGA FALLS, OH Summit Lapidary Club and Akron Mineral Society Semi-Annual Show. Sat 10 am - 6 pm; Sun 10 am - 5 pm. Emidio and Sons Expo Center, 48 East Bath Rd., Cuyahoga Falls. Contact: Sandy Shorter, 8510 Grouse Ridge Dr., Chardon 44024; (440) 479-0069; gemboree@outlook.com

Additional Shows outside our immediate area are posted at <http://www.amfed.org/mwf/Calendar/April.html>

May 2019

The **State Line Gem and Mineral Society** will hold its 58th Annual Jewelry, Gem, and Mineral Show/Sale, May 31, June 01 & 02, 2019. We invite all club members, their families and friends to join us at the Junior Fair Building at the Fulton County Fairgrounds, 8514 SR 108, just west of Wauseon, Ohio.

Admission:

Adults \$4.00: Seniors and Students \$3.00: Children under 12 Free.

Hours: Friday 12:00 P.M. - 6:00 P.M. Saturday 10:00 A.M. - 6:00 P.M. Sunday 11:00 A.M. - 4:00 P.M.

MSHA Mine Safety Class

Joel Vicary will present a MSHA Mine Safety Class on Saturday from 10:00 AM to 3:00 PM. This is a very informative class and results in certification which is necessary for admittance to many quarries. The class is \$15.00 and the Mine Safety Manual (should you need one) is also \$15.00. There will be an hour break for lunch.

Wire Wrapping Class

On Sunday, Shellie Carder will teach a wire wrapping class. The class fee is \$30.00. Class size is limited, so be sure to register early.

For additional information contact the Show Chairperson, Sherm Kardatzke at (517) 673-5487 or email him at sakardatzke@gmail.com.



Tool Talk: The Flat Lap Grinder/Polisher Machine **

When preparing to shape and polish a specimen for ultimate use in a piece of jewelry you will most likely want to use a Grinder and Polishing machine. In ancient times and as late as the 17th century grinding and polishing was done by hand. With the advent of the industrial age machines made it much easier to complete this process quickly with the same high quality. Flat Laps use six or more diamond coated metal grinding disk each with progressively finer grits. Beginning with the coarsest grit, initial flattening is necessary before finishing on the remaining disk. Inspect your piece often to assure that there are no scratches or low points remaining from the previous disk before you

advance to the next.

Caution: NEVER use these machines to grind or polish Sandstones, Limestone, metal or any specimen that contain metals. Doing so would remove the diamond coated surface from disk requiring costly replacement.

As with most lapidary equipment you must inspect the machine before you begin. Flat Lap Machine guards should be in place to keep water spray contained and prevent any debris from being thrown outside of the work surface. Repair or replace any loose or broken items before using the machine. A water reservoir or tank is mounted above the machine to emit water through feed lines above the work surface. Opening the valve below the reservoir should result in an adjustable stream of water flowing onto and washing over the surface of the disk. Disks must be thoroughly wetted before beginning so if there is no obvious stream of water present, verify that there is water in the tank and valves are open with no obstructions. As necessary add water to the reservoir before you begin and as needed during grinding and polishing operations. The Flat Lap machine has a belt driven threaded arbor which is turned by the motor. The arbor has a metal plate mounted on it to serve as a base on which the diamond disk will set and held in place by a nut and washer. The crafter must assure that the nut is securely tightened onto the diamond grinding disk using a small wrench if needed. If you are unable to make repairs or adjustments yourself report the problem to the session Moderator.



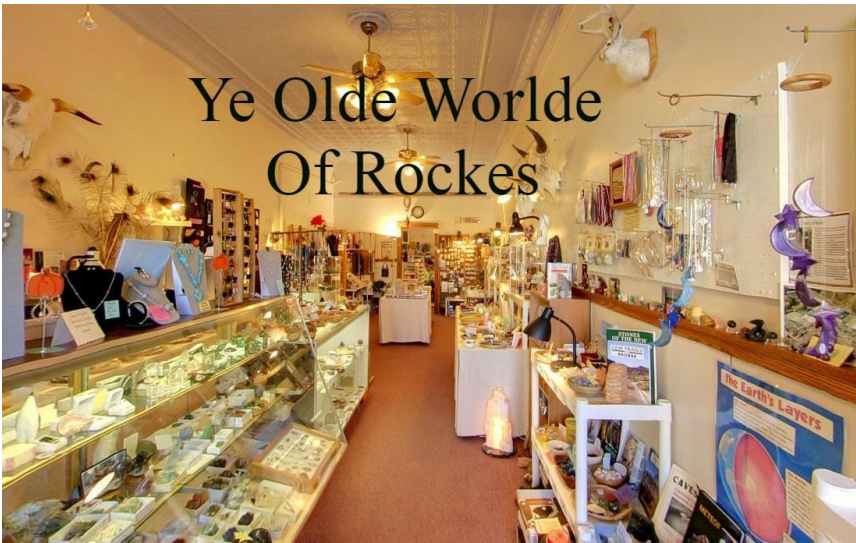
The Flat Lap is most useful when polishing a piece that will not necessarily be domed such as a belt buckle, bolo or knife-scales. When preparing to shape and polish a stone it is first necessary to first make a plan how best to do it. Starting with a course grit one can quickly complete the initial flattening using a generous flow of water. Once on the disk it is critical that you keep the work piece in motion moving in toward the center and out to the rim to maintain an even surface and wear pattern. Since you will most likely be holding the piece to be ground in your bare fingers it is critical to keep a firm grip on the piece to keep it in contact with the disk and prevent it from being thrown off. Best results can be had by continuing to rotate the piece 90 degrees checking the piece often to maintain a smooth flat surface. When moving on through progressively finer grits you should reduce the water flow to prevent floating and continue rotating the piece during polishing. Due to the hardness of different materials it is necessary to finish polishing very slowly using light pressure. Edges may show some chipping that can then be removed on a polishing wheel machine. Final polishing is done on the leather buffing wheel using polishing compounds. Do your research before you begin to assure the best results. Crafters should refer to the literature or select one or more of the many video tutorials available on-line.

When you have finished your project, you should give the machine a good cleaning by wiping surfaces free of excess water, oil and debris with sponges, shop rags and paper towels as needed. The surface of the base plate and threaded arbor should receive a coating of oil to prevent rust and preserve the tool for the next time that you or another club member will want to use it. Finally, check once again to assure that all power and water is shut off.

Next month's **Tool Talk** will cover the safety, operation and maintenance of the Faceting Machine. Always remember, we all depend upon one another to keep our Craft Centers operation safe, clean and efficient.

*If you are unfamiliar with any operation call on the Moderator to assist you.

Rock Shop of the Month: World of Rocks, Ypsilanti, MI

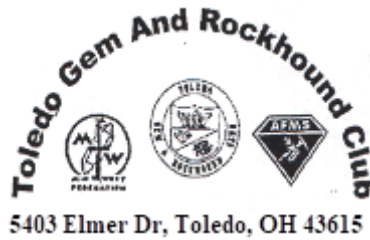


Based on a growing love of lapidary, World of Rocks serves the hobbyist, the educator, the student, and the collector. Our love of rocks has spilled over to include beading and the metaphysical arts. World of Rocks has been a business for 25 years based on a growing love of lapidary. They serve the hobbyist, the educator, the student, and the collector. They offer fossils, lapidary equipment, beading supplies and tools, arrowheads, meteorites, and many unique specialties.

World of Rocks is located at 42 N. Huron Street in Ypsilanti, MI. or shop online at their secure website www.worldofrocks.com If you have any questions you can call, email or visit their website. (734) 481-9981 / gail@worldofrocks.com

For a full calendar of events and activities visit the "Events Page" of the Toledo Gem & Rockhound Club web-site at <http://www.rockyreader.com/Home/Events> and use the arrow pad to select the month. A copy of the most current calendar is provided below and Printed calendars will be available in the craft center and distributed at monthly meetings.

On Facebook? So is the club along with postings from members and lots of pictures! Please, comment, post your own photos and "LIKE" us! <https://www.facebook.com/ToledoRockhounds>



Your Invited to the



TOLEDO GEM & ROCKHOUND CLUB

SPRING OPEN HOUSE SHOW & SALE APRIL 27-28TH, 2019

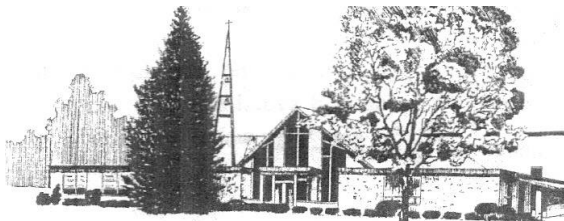
Saturday 9 am - 5 pm
Sunday 11 am - 4 pm

Handcrafted Treasures of the Natural World

Over millions of years the elements that make up the surface of our world have formed into rocks and minerals of great natural beauty that when combined with the skill of a stone crafter or Lapidary artist are transformed into precious and semi-precious gems and items of jewelry, many mounted in handcrafted Silver, that you will enjoy for years to come.

Interested in Collecting?

Millions of young and old have joined the ranks of amateur **Rockhounds**. They enjoy collecting rare rocks, minerals and fossils that offer an endless variety of shape and color. 100's of natural, slabbed or polished specimens will be offered to help you get started or fill a gap in your own collection or serve as a featured item in your homes decor.



**Rock & Gem Open House
St James Lutheran Church
4727 W Sylvania Ave, Toledo, OH
43623**

**Handcrafted
Precious & Semi-
precious Jewelry**

**Intricate Handmade
Beaded Treasures**

**Make-it-and Take-
It: Gem Trees, Bead
Bracelets, & More...**

**Geode's, Agates,
Crystals & Gems**

Ancient Marine

**Fossils, Petrified
Dinosaur bone, Trees
& Plants**

**TOLEDO GEM &
ROCKHOUND CLUB
5403 Elmer Drive
Toledo, OH 43615**

<http://rockyreader.com/>

