



The Rocky Reader

The Monthly Newsletter of The
Toledo Gem and Rockhound Club

Volume 57, Issue 5

May 2019

Message from the President

Dear Club Members,

The month of May is starting to be a busy time for folks! The weather is warming up! We have students graduating from school, and the end of the school year for others. Let the rockhounding begin! This summer provides opportunities for field trips with the club, joining a group within the club and having a chance to socialize with other club members with similar interests. We have Beaders, Extreme Beaders, Faceteers, Gem Crafters, Metal Crafters and a new group which will be open to the public on the 2nd and 4th Monday evening every month. Join one or all of them and enjoy other folks with similar interests.

Many of our members are looking forward to our first field trip in May. While our local weather has been a bit wet, I can't imagine what they will find on the shores of Lake Superior. With such dedication I am sure that they will be rewarded with some awesome Agates. See the details on page 4.

I hope to see you at our Pot-luck meeting to be held at the Toledo Botanical Gardens on May 15th at 7pm in the Toledo Artists Club building.

Keep on rocking!
Catherine Clevenz, President

May Potluck



The May Meeting will feature the Spring Potluck at the Botanical Gardens Artist Club Bldg 7-9pm. Members beginning with A-M should bring a Meat dish and N-Z are asked to bring Vegetable sides or Salads. Everyone is invited to bring a desert of your choice. Questions: Contact Tom at [\(419\) 885-0848](tel:4198850848).

PRESIDENT

Catherine Clevenz
clevenz@gmail.com

419-340-5276

VICE-PRESIDENT

Peggy Argabright
ptoepher@yahoo.com

TREASURER

Glen Toepfer
gwtoepfer@cqasolutions.co

419-460-0846

SECRETARY

Katherine Smarkel
pixelusprime@gmail.com

419-708-0925

SERGEANT.-AT-ARMS

Chet King
cljking@accesstoledo.com

419-841-4272

BOARD MEMBERS

Mike Mayers
glassman@bex.net

419-343-6730

Meg Barnhizer
superscouts@bex.net

419-885-0848

Kathy Petersen
mlrlyt@AOL.com

419-536-6606

MEMBERSHIP CHAIR

Steve Shimatzki

FIELD TRIP CHAIR

Kealy Goodale
419-202-4549
Kealygoodale@gmail.com

SHOW CHAIR

Steve Shimatzki
sjs132@gmail.com

419-861-0147

OPEN HOUSE CHAIR

Tina Mitten
mitttalk64@gmail.com

419) 810-2993 (Txt)

EDITOR - ROCKY READER

Tom Barnhizer
Superscouts258@gmail.com

(419) 381-4418

The Toledo Gem and Rockhound Club News May 2019

May Meeting Announcement

The next general meeting of the Toledo Gem and Rockhound Club will be held in the TBG Artist's Club's Studio on May 15th at 7 pm. May will feature our annual Pot Luck dinner. Members are asked to bring a dish to pass: Using your last name, A-M a Meat entree; N-Z a Vegetable Side dish or Salad. Any member may bring a desert.

Craft Center Spring Cleaning Continues

The Craft Center underwent an initial clean-up last week. Thanks goes out to Michelle and anyone else who pitched in. Most items that were affected were either moved to our new storage locker or relocated within the Center. As we move through Spring into Summer there will likely be some additional cleaning that will be required. Once a new list has been developed volunteers will once again be needed. Thanks in advance for stepping up.

New Group for Rockhounds:

An initial meeting of interested members was held in April to reform the former Rockhound Group for those members who would like to discuss prospecting and collecting rocks, minerals, meteorites and fossils. This Group, which will be open to the public, will meet on the 2nd and 4th Mondays of each month from 6:30 – 8:30 pm. Members will also help to identify specimens, discuss labeling and best methods to display collections. In addition, it may be of interest for members to trade/swap naturally occurring rock and mineral specimens including common rocks, fossils, metallic ores, gems, meteorites and semi-precious stones.

Field Trip Chair - Message from Kealy Goodale.

"I'm looking forward to the coming months and the trips we are planning. I have several locations in mind that feature extensive collections of fossils, cabs, slabs and specimens. Some are display only, some are for sale; All have stories." Ideas for the future- Ohio Caverns, Neither's Farm (Flint Ridge), VRock shop in North Canton, Pawn Broker, Jeweler with laser tech tour, countertop, tombstone and landscape art, tile manufacturers, cemetery, Indian artifact museums, other lapidary clubs, metalsmith crafter clubs and workshops." Should any member want to organize a field trip they should contact Kealy with information on the activity including planned dates and times. We look forward to Kealy's ideas for awesome field trips in the year ahead.

Access to the Garden

With Summer right around the corner our hours of daylight are growing longer. we can enter the park via the Main Gateway entrance or the Olympia Drive entrance which is between the main gate and the Education Center. You may use the parking lot by our Craft Center if space is available or choose to park in the Garden in the lot next to the Toledo Artist Guild. As a reminder, when using the Craft Center the last one out after sunset should close and lock the gate access to our parking area.

New Garden Ambassadors Toledo Botanical Garden & Wildwood

This new volunteer assignment will help with scheduled tours of the gardens by welcoming tours, getting the guests started on self-guided tours, answering questions about the gardens, and assisting with garden bed identification. Please contact Kelly at kelly.griffin@metroparkstoleado.com with questions or for information on our upcoming training.

Olander Park Activities

Fossil Park opened on April 15th. Access to the Parks is off of Centennial Road across from Mayberry Village's Shopping Center. Fossil Park provides the public with the opportunity to collect 350-million-year-old marine fossils from the Devonian Period such as mussels, brachiopods, crinoids and, everyone's favorite, Trilobites. The first tetrapod's or land-living vertebrates, appeared during the Devonian, as did the first terrestrial arthropods, including wingless insects and the earliest arachnids. Crinoids and other echinoderms, tabulate and rugose corals, and ammonites were also common.

The Cincinnati GeoFair - May 4 & 5 See Treasures from Nine Outstanding Museums

GeoFair is Cincinnati's largest non-profit gem, mineral, fossil & jewelry show. The 54th annual GeoFair will delight visitors over the first weekend in May. You would have to travel from Indiana to Maine to see all the breath-taking mineral and fossil specimens on display at GeoFair 2019. This year's roster of outstanding museum collections on display includes the Cincinnati Museum Center, Cranbrook Institute of Science, Indiana State Museum, Limper Geology Museum of Miami University, Maine Mineral and Gem Museum, Wayne State University Geology Museum, Wittenberg University Geology Department, A.E. Seaman Mineral Museum and Ben E. Clement Mineral Museum.

Saturday, May 4th 10:00 a.m. to 6:00 p.m.

Sunday, May 5th 11:00 a.m. to 5:00 p.m

Sharonville Convention Center Sharonville Convention Center
11355 Chester Road 11355 Chester Road

GeoFair's themes this year are "**Colorful Crystals and Fascinating Fossils**," so visitors will find exceptional displays of specimens along these lines.

Admission to GeoFair is \$9 for adults and \$3 for children. A two-day adult pass is available for \$12. Plentiful parking is free at the Sharonville Convention Center. Scouts in uniform get free admission, as do teachers with identification when accompanied by a paying adult. (A coupon for \$2 off adult admission is offered for download at GeoFair.com)

Since 1965, GeoFair has introduced thousands of families to the pleasures of the earth sciences including collecting minerals and fossils, making jewelry and studying geology. Experts at GeoFair will identify any fossil or mineral specimens or any items of jewelry. Dozens of displays showcase the rare "finds" of amateur collectors. GeoFair is produced by the Cincinnati Mineral Society and the Cincinnati Dry Dredgers, an association of amateur paleontologists. For more information on GeoFair 2019, see their website at www.GeoFair.com

The MWF CONVENTION

The 2019 Midwest Federation is in the books and our own President, Catherine Clevenz, has been named the Chair of the Environmental Legislative Committee. The 2020 MWF Convention will be hosted by the Livingston Mineral Society. If you would like to see the monthly newsletter of the MWF check out the MWF webpage at <http://www.amfed.org/mwf/convention/convention.html>.

2019 Fall Open House Show and Sale:

The Fall Open House is scheduled for November 2nd and 3rd and will once again be held at St. James Lutheran Church on W. Sylvania Avenue in Toledo, Ohio.

Planning Begun for the 2019 Toledo Gem and Rockhound Show.

Planning has begun for the 48th Annual Toledo Gem and Rockhound Show at the Stranahan Convention Center on Heatherdowns Blvd. in South Toledo. Show Chair, Steve Shimatzki and his wife, Suzanna have a quantity of this year's promotional flyer which in the form of a postcard. The Show Dates in 2019 are Sept. 6, 7, and 8th with set-up on Sept. 5th. Steve will be forming a committee with committee chairs aided by volunteers to help out and most especially a loading and clean-up crew to prep the Stranahan Convention Center prior to the event and tear down on the final day. Club members should begin to plan for any displays that will be voted on by the visiting public. Also Steve would like to invite members to donate generously to the annual raffle. If you have any new ideas for the show or would like to volunteer to staff one of the many work stations, demonstrations or presentations that are planned please contact Steve or Sue at sjs132@gmail.com as soon as possible.

Field Trips In May:

Catherine Clevenz announced that the Club is planning a Mid-May Field Trip to Michigan's Upper Peninsula to collect Lake Superior Agates and other rock and mineral specimens including native Copper. The planned date of this trip is Friday, May 17th through Sunday, the 19th.



There are a half dozen major beaches between the City of Munising and Whitefish Point, a distance of 60 – 70 miles.

The most comfortable access to the Deer Park (on paved roads) is from Newberry about half way between , via Highways 123 and 407 (27 miles). The beach at Muskellunge State Park has produced numerous finds while beach combing. Grand Marais Michigan is another favorite, offering an extensive beach with lots of variety of rocks and a reputation for some huge Agate specimens. Grand Marais is also home to the **Gitche Gumee Agate Museum**, a must see stop for any agate fan. When collecting on state and federal public lands, you should check with the local offices as to their rock collecting rules. ... **Note** - Michigan law (2017) prohibits removing more than 25 pounds of rocks or minerals per year from state-owned lands, including the bottomlands of the great lakes.

For more ideas on best locations to search for agates and other collectible rocks visit the Lake Superior Trails webpage at www.superiortrails.com/rock-hound.html .

Rockhound [Book] Review of the Month

The Modern Rockhounding and Prospecting Handbook; by Garret Romaine, *A Falcon Guide* c. 2014. An easy to read text on a fascinating hobby with lots of pictures and a fun guide for the avid collector. With Chapter titles like: What to look for; Where to find it; What to do with it...as well as information on other resources makes this book a real “gem” (pun intended) for all of the Rockhounds in your home. \$21.95 on online or at a bookstore near you.

Donations:

Many thanks go out to Jim and Marcia Hintz for their donations of rock and mineral specimens including a number of mini geodes to the Future Rockhounds of America Club. They collected these specimens while visiting Arizona and Colorado this past Winter. If you have tools, machines or lapidary materials and have been thinking of donating items to the Club please call or e-mail any of our Club Officers listed above for information.

TGRC Trading Post **FOR SALE; SLABS !**

Ken and Beverly of Arlington Ohio have over 100 kinds of slabs: Agates, Jasper, Jade, Flint, Opal, Sodalite, Rhodnite, Thundereggs, etc. at reasonable prices. I can personally vouch for that as it took me at least two hours to see only a portion of his inventory. It would be accurate to refer to this collection as "the House of 1,000 slabs." Dozens of boxes of slabs are cataloged along with his extensive collection of rock and mineral specimens which he generously opens up to Clubs and local schools.

Ken's farm is located at 20278 Ohio Rte 184 just southeast of Arlington, Ohio, about one hour's drive from Toledo. Follow I-75 south through Finlay to I-23 south toward Columbus, Ohio. Off I-23 take State route 68 south toward Kenton, Ohio which goes through Arlington. Just ½ mile south of Arlington turn left onto Ohio Rte152 for two miles then right onto SR 184 for about a tenth of a mile on the right. PLEASE CALL **419-694-4203** and ask for Ken. IF NO ANSWER LEAVE A MESSAGE ON THE MACHINE. Ken says that he will be open for customers for a bit longer this Spring so don't delay.

The State Line Gem and Mineral Society will hold its 58th Annual Jewelry, Gem, and Mineral Show/Sale, May 31, June 01 & 02, 2019. We invite all club members, their families and friends to join us at the Junior Fair Building at the Fulton County Fairgrounds, 8514 SR 108, just west of Wauseon, Ohio.

Admission:

Adults \$4.00: Seniors and Students \$3.00:
Children under 12 Free.

Hours: Friday 12:00 P.M. - 6:00 P.M. Saturday
10:00 A.M. - 6:00 P.M. Sunday 11:00 A.M. -
4:00 P.M.

MSHA Mine Safety Class

Joel Vicary will present a MSHA Mine Safety Class on Saturday from 10:00 AM to 3:00 PM. This is a very informative class and results in certification which is necessary for admittance to many quarries. The class is \$15.00 and the Mine Safety Manual (should you need one) is also \$15.00. [**No Registration required – Walk-ins accepted.**] There will be an hour break for lunch.

Wire Wrapping Class

On Sunday, Shellie Carder will teach a wire wrapping class. The class fee is \$30.00. Class size is limited, so be sure to register early.

For additional information contact the Show Chairperson, Sherm Kardatzke at (517) 673-5487 or email him at sakardatzke@gmail.com .



GEMCRAFTERS MAY UPDATES:

Fordite Classes Open for Registration

Two sessions on cabbing Fordite will be offered on Sunday, May 5th, the first at 1:00 pm followed by the 2nd at 2:30 pm. A quick internet search tells us that **Fordite**, also known as **Detroit agate** or **Motor City agate**, is old automotive paint which has hardened sufficiently to be cut and polished. It was formed from the buildup of layers of enamel paint slag on tracks and skids on which cars were spray-painted. The colorful layers of Fordite over-spray have been baked numerous times allowing it to be cut, polished and recycled into jewelry. Sessions will be taught in the Craft Center and limited to five members per session. The cost for this class is \$15.00 which includes one piece of Fordite sufficient to make a medium cab. You may register by calling Joanna Toepfer at (419) 460-0846 or email to joanna@cqasolutions.co Call soon as spaces are limited.

Petoskey Class, Sunday, June 23rd

We are fortunate in that Petoskey Stone is fairly common in our region as this soft stone fossil can be made into cabochons for jewelry, belt buckles, bolos, knife handle scales, etc. Our Gemcrafters will guide you in selecting the better stones that will take a good polish. They will also show you how to choose from a variety of shapes and patterns that will give you the best results. This class, which is open to all members, will demonstrate the proper cutting, grinding and final polishing in two separate sessions; the first at 1 pm followed by a second at 2:30 pm in the Clubs Craft Center located in the Toledo Botanical Gardens. Registration first come basis; Cost: \$15 materials provided. Contact Joanna Tropher at (419) 460-0846 or email to joanna@cqasolutions.co for details and to sign up.

The May Cabochon of the Month is Ohio Flint

Flint, a form of Silica and variety of quartz, is a durable rock characterized by its hardness and brittleness, allowing the rock edge to flake when struck resulting in razor sharp edges. These qualities made flint the primary material manufactured tools such as scrapers and drills. There are into tools such as chert, all these types of stone are flint is truly a purer form of bedded in layers of limestone state by glaciers. Ohio flint Brassfield Limestone of the



deposited in the tropical seas that once covered Ohio during the Paleozoic Era. Heat treating Ohio Flint results in intensifying the colors that are present. Ohio Flint has been named as the States Gemstone and has long been tumbled or cut and polished into fine pieces of jewelry by lapidary artist.

Open work sessions:

Saturdays; 2nd, 3rd and 5th Saturdays from 9am to 4pm with Joanna Toepfer moderating.

Wednesdays: April 3, 10, 17 and 24th from 6 to 9 pm with Chet King moderating.

Thursdays: April 4, 11, 18 and 25th from noon to four pm with Chet King moderating.

Training Sessions: To learn the correct steps to make a quality cabochon or how to use the Slab Saws and other lapidary equipment. Please contact Joanna Toepfer, Chet King or Elie Ghanime if you would like to participate in any upcoming training session. Introduction to Gem Crafters Classes are scheduled as needed. To participate in any of these beginning classes let Joanna or Chet know of your interest as soon as possible.

Gem Crafter Moderators: Thanks to Joanna Toepfer and Chet King. Should any member be interested in becoming a Moderator please contact Joanna Toepfer joanna@cqasolutions.co who is looking into setting up a Moderator Training Course.

Gemcrafters Chair Fund:

Gemcrafters has nearly reached its goal for donations to purchase several adjustable swivel office chairs that will replace the existing metal folding chairs. Joanna has said that they are hoping to get a final \$43.00 that will allow Gemcrafters to buy the new chairs. If you are interested in making a donation you may place your cash or check in a marked envelope and leave it in the Craft Center for deposit into this temporary fund. Thank you in advance for your generosity.

FACETERS:

Into to Faceting Class.

Faceting Gemstones can seem like a challenge, however, it is a skill that can be learned by just following some basic steps. Chet King has openings for members to sign up for his hands-on weekend faceting classes in the Craft Center. If you don't have your own Faceting Machine the Club can provide one for you to use. Classes are held on the 2nd and 4th weekends of each month beginning each day at 10 am through 4 pm.

Elie Ghanime has offered to teach an **Intro to Faceting** Class that covers technical/design aspects and include a hands-on Faceting Machine session. Elie is asking for another eight members to have a minimum of 10 individuals to conduct classes of this nature. The fee for this class is \$85 and includes a printed manual along with hands on instruction. Please email Elie at eg.therockman@gmail.com to put your name on a list for the next training session.

METAL CRAFTERS

Brian King will be available on Wednesday evenings at 6:00 pm and alternating Saturdays for Weekend Open Sessions. For the month of May Metalcrafters will meet on the 1st and 3rd Saturdays. Please email Brian at bking3@me.com if you would like to attend so he can have the facilities ready.

BEADERS:

TGRC Beaders will meet on the third Monday of the Month at 6PM. The Beaders Group is also putting together Gem Tree Kits for the Open Houses and future projects. In addition, Nancy says that she will have materials for you to make your own Shark Tooth necklace. If you are interested in beading, contact Nancy Grove nancy7536@att.net for more information.

ADVANCED BEADERS:

The "Extreme" or Advanced Beaders meet on Tuesdays beginning 9 AM to 4 PM. Participants should be able to work independently on their own projects. If you would like to join, but need more information, contact Kathy Petersen mlrlyt@AOL.com or Shirley Stieb at sstieb828@gmail.com .

TRGC Future Rockhounds Of America:

In April our Future Rockhounds were invited to attend and participate in the Spring Open House event. Each youth is asked to bring one or more items from their own collection. They are encouraged to view all of the displays and learn more about Lapidary Arts and Crafts. The month of May will find us at Fossil Park on Centennial Road in Sylvania where we will discover, collect and identify fossils of the Devonian Era. This will be our first Field Trip of the year.

The FRA Club will meet in the TGRC Craft Center on the 4th Saturday of each month from 2-4 pm accompanied by a parent or guardian.

SUNSHINE: No Report.

May/June Events and Regional Shows

4-5: SHARONVILLE, OH Cincinnati GeoFair 54th Annual Gem, Mineral, Fossil & Jewelry Show of Greater Cincinnati. Sat 10 am - 6 pm; Sun 11 am - 5 pm. Sharonville Convention Center, 11355 Chester Rd., Sharonville. www.genfair.com **FLYER**

18-19: ST. JOSEPH, MI Blossomland Gem & Mineral Society Annual Show. Sat 9 am - 6 pm; Sun 12 noon - 6 pm. Lake Michigan Catholic Elementary School, 3165 Washington Ave, St. Joseph. Contact: Pam Kriegsmann, (630) 779-8258, blossomlandrockclub@gmail.com

18-19: N. OLMSTED, OH Parm Lapidary Club Annual Show. Sat 10 am - 6 pm; Sun 10 am - 5 pm. Soccer Sports Plex, 31515 Lorain Ave., N. Olmsted. Contact: Holly Zewalk, parmalapidary@yahoo.com www.parmalapidary.org

May 31- June 2: WAUSEON, OH State Line Gem & Mineral Society Annual Show and MSHA Training by Joel Vicary. Fri 12 noon - 6 pm; Sat 10 am - 6 pm; Sun 11 am - 4 pm. Fulton County Fairgrounds, Junior Fair Building, 1814 SR 108, Wauseon. Contact Sherman Kardatzke, (517) 673-5487; sakardatzke@gmail.com <http://statelinegms.com>

Rock Shop of the Month: WHAT ON EARTH, Columbus, Ohio

Founded in 1974, What On Earth is a tradition in Columbus, Ohio specializing in jewelry, gift items, and the products of nature.

The Shops has a wide variety of sterling silver and gold jewelry, sometimes utilizing traditional gemstones but featuring the unusual. Here you will find amber, ammolite, larimar, agates and jaspers, turquoise (native made) and a wide variety of pearls, as well as tanzanite, rubies, sapphires, tourmalines, amethyst, garnets and more. We also produce handmade jewelry and custom designs and do jewelry repairs in sterling silver and gold.



The Columbus jewelry store and gift shop at 1727 W. Lane Avenue, Columbus, OH 43221 features a large display of minerals, fossils, butterflies, insects, carvings and other products of nature for the discerning collector, interior décor and gift giving. Specimens from **What On Earth** grace some of the finest homes in central Ohio and museums around the world. Call our shop at (614) 487-0357 or visit our webpage at www.whatonearthstore.com/home/

Nuggets



Old Rockhounds never die...they just "Petrify."

Lourdes University's Rock and Mineral Display

Adjunct Instructor, Earl Heath, and Elaine Ault, Instructor, at Lourdes university enlisted the help of The Toledo Gem and Rockhound Club to identify and organize [a] collection of rocks that had been donated to the university.

Lourdes University has a collection of rocks and minerals on display for the use of science classes. The rocks and mineral have been donated to the University over a long period of time. However, they were not organized, and a large number were not identified. Over the years the collection was moved from room to room and finally ended up in some storage rooms and cupboards and boxes out of sight.

Instructors could sort through the collection and select some items to show students. To solve this problem. Two instructors and three volunteers' members of the Toledo Gem and Rockhound club helped identify and organize the collection. The volunteers were a great resource and the project would not have been accomplished without their help.

The next step was to determine how to display part of the collection. Elaine Ault, an instructor, received a grant from the University to purchase four large glass cases. The display, which is located on the second floor of Mother Alidade Hall, is open for the public. The rocks and minerals are labeled, and the cases are lighted with LED lights.

The display is organized to illustrate the Rock Cycle, Moh's Hardness Scale, Igneous, Sedimentary, and Metamorphic rocks. the display is currently being used by the science teachers. Information about the activities of the Toledo Gem and rock show are posted by the display. We are pleased that Diana, Diane and Frank and take great pride in their efforts.



Tool Talk for May:

What's in Your Bucket?

As Summer approaches, we need to be thinking about those upcoming weekend field trips. Will you and your tools be ready this year? What should you plan to carry on your "Rock-peditions" that you wished that you had last year? Are you prepared for emergencies or an unexpected overnight? Here is a list of tools and equipment that any Rockhound should appreciate.

Basic & Advanced Rockhound Tool Set –

- Tool Belt
- Work Gloves
- Helmet (OSHA)
- Eye & Ear Protection
- Rock Hammer(s)
 - 2lb Cracking
 - 4-5lb Cracking
 - Chipping
 - Sliding Pipe Hammer
- Heavy metal Chisel(s)
- Shovel
- Probing Bar
- Gem Scoop
- Pick
- Saw(s)
- File/Sandpaper
- Magnet
- Pocket Knife
- Squirt Bottle
- Canteen
- Collection Bag(s)
- Notebook
- Field Guide(s)
- Maps & Geological Information
- GPS
- Boxes & Wrapping Paper
- Plastic Bucket(s)
- Film Canisters

- Loop/Magnifying Lens
- Streak Plate
- Come-a-Long Winch
- Gold Pan & Screens

Basic Clothing Items & Equipment -

- Work Gloves
- Work Clothing (Seasonal)
- Rainwear
- Ball-Cap or Wide Brimmed Hat
- Work or Hiking Boots
- Backpack
- Fanny Pack
- Head Lamp (300+ Lumens)

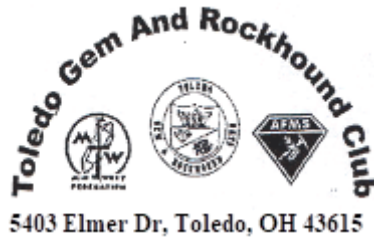
Other Considerations

- Radio(s)
 - FRS
 - CB
 - Weather
- First Aid Kit
- Camera
- Survival Kit
- Camping Gear
- Extra Batteries
- Vehicle Repair Tools

Cash/coins

For a full calendar of events and activities visit the "Events Page" of the Toledo Gem & Rockhound Club web-site at <http://www.rockyreader.com/Home/Events> and use the arrow pad to select the month. A copy of the most current calendar is provided below and Printed calendars will be available in the craft center and distributed at monthly meetings.

On Facebook? So is the club along with postings from members and lots of pictures! Please, comment, post your own photos and "LIKE" us! <https://www.facebook.com/ToledoRockhounds>



Your Invited to the



TOLEDO GEM & ROCKHOUND CLUB
FALL OPEN HOUSE SHOW & SALE
NOVEMBER 4-5TH, 2019

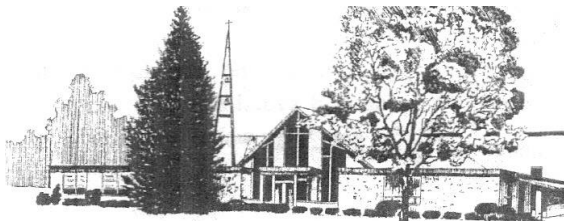
Saturday 9 am - 5 pm
Sunday 11 am - 4 pm

Handcrafted Treasures of the Natural World

Over millions of years the elements that make up the surface of our world have formed into rocks and minerals of great natural beauty that when combined with the skill of a stone crafter or Lapidary artist are transformed into precious and semi-precious gems and items of jewelry, many mounted in handcrafted Silver, that you will enjoy for years to come.

Interested in Collecting?

Millions of young and old have joined the ranks of amateur rockhounds. They enjoy collecting rare rocks, minerals and fossils that offer an endless variety of shape and color. 100's of natural, slabbed or polished specimens will be offered to help you get started or fill a gap in your own collection or serve as a featured item in your homes decor.



Rock & Gem Open House
St James Lutheran Church
4727 W Sylvania Ave, Toledo, OH
43623

**Handcrafted
Precious & Semi-
precious Jewelry**

**Intricut Handmade
Beaded Treasures**

**Make-it-and Take-
It: Gem Trees, Bead
Bracelets, & More...**

**Geode's, Agates,
Crystals & Gems**

Ancient Marine

**Fossils, Petrified
Dinosaur bone, Trees
& Plants**

**TOLEDO GEM &
ROCKHOUND CLUB**
5403 Elmer Drive
Toledo, OH 43615

<http://rockyreader.com/>

