



The Rocky Reader

The Monthly Newsletter of The
Toledo Gem and Rockhound Club

Volume 57, Issue 11

November 2019

Message from the President

Dear Club Member,

Hi! With the busy holidays looming near I just want to bring you up to speed with a few reminders of upcoming events within our club. We will be having our general club auction and are in need of donations. Please bring us your unwanted rock and minerals, lapidary and metalcraft supplies, equipment, magazines, beads and more. All proceeds will go only to the general funds as they have in past years.

I am urging all members to come to the November meeting for the election of new officers. If you wish to be nominated to run for a position, it's not too late! You can be nominated by other club members the night of the meeting, but before the voting begins.

We will once again have a Christmas ornament contest! The contest will be held at our December meeting. Any member may enter this contest with no more than 2 entries per person. First prize is \$25, 2nd prize is \$15, and 3rd prize is \$10.

We will also be having our Pot Luck Dinner in December. More about this at the November meeting. Keep on Rocking!

Catherine Clevenz

TG&RC President

November Club Auction

The annual November Club Action will be held immediately following the general meeting to support the operations of the Toledo Gem and Rock Club. All Members are invited to bring an item of their choice to place in the Auction. As in past auctions you will be able to choose between a wide selection of slabs, cabs, fossils, rock and mineral specimens and finished jewelry pieces hand crafted by our own lapidary artist. In addition, we will also have a selection of rough specimens from our store of rocks and minerals up for bid. **Just remember, there are no friends at the auction...or at least until after the gavel falls.**

PRESIDENT

Catherine Clevenz
clevenz@gmail.com
419-340-5276

VICE-PRESIDENT

Peggy Argabright
ptoepher@yahoo.com

TREASURER

Glen Toepfer
gwtoepfer@cqasolutions.co
419-460-0846

SECRETARY

Jerri Heer
jheerx@aol.com
419-344-9999

SERGEANT.-AT-ARMS

Chet King
419-841-4272
cljking@accesstoledo.com

BOARD MEMBERS

Mike Mayers
glassman@bex.net
419-343-6730

Kathy Petersen
mlrlyt@AOL.com
419-536-6606

MEMBERSHIP CHAIR

Michelle Grigore
Mgrigoretgrh@gmail.com
419-270-7507.

SUNSHINE CHAIR

Peggy Argabright
ptoepher@yahoo.com

FIELD TRIP CHAIR

Kealy Goodale
419-202-4549
Kealygoodale@gmail.com

SHOW CHAIR

Steve Shimatzki
sjs132@gmail.com
419-861-0147

OPEN HOUSE CHAIR

Tom Barnhizer
Superscouts258@gmail.com
(419) 885-0848

The Toledo Gem and Rockhound Club News

November 2019

November Meeting Announcement

The next general meeting of the Toledo Gem and Rockhound Club will be held in the TBG Artist's Club's Studio on Wednesday November 20th at 7 pm.

The TGRC Craft Center



After months of searching our Board has approved the lease of a facility in West Toledo located at 2453 Tremainsville Road just South of Laskey in the City of Toledo. We Initially planned to lease 2,600 sqft in the rear of the building, however, we have negotiated an additional space for a total area of approximately 3,500 sqft. This will allow for us to move our lapidary equipment and supplies as well as the materials that we presently have in paid storage into this expanded area.

The floor plan for the new facility is presently being laid out with the help of the landlord to provide for our use. There is a lot that needs to be done before we can move in and begin operations, hopefully, by the end of the year depending upon the number of volunteers that turn out to make it happen. We will continue to use the existing building for meetings and activities through the end of the year including Heralding for the Holidays. As we enter into this new chapter of the TGRC we ask for your support in making this transition as seamless as possible and understanding for likely disruptions of the existing programs that we offer.

TGRC Election Scheduled for November

The nominating Committee submitted a list of candidates to fill a number of positions in the coming year. While several Officers will be standing for re-election, nominations are sought for all Officer positions as well as two positions on the Board of Directors. The following individuals have been nominated for the available positions that will be voted upon at the November general meeting:

President – Hollie Smith

V. President – Peggy Argabright (per Exec. Session of the Board)

Secretary – Gerry Herr

Treasurer – Glen Toepfer

Sergeant at Arms – Todd Goodale

Board of Directors seats - Michelle Grigore and Angie Williams

Nominations remain open from the floor for any of the above positions until closure prior to the casting of votes at the November meeting. Any interested member is invited to call the Chair of the Nominating Committee or Club President.

Donations

Thank you to all the club members who donate their time and resources to the club!

The club would like to get an accurate assessment of the amount of physical donations we receive each year as well as acknowledge those who give! As such, our Treasurer, Glen, is requesting that anyone who donates please give your donation receipts to your group moderator so they can be given to the Treasurer. A donation form will be provided in the craft center.

Thank you for your cooperation and thank you for all you do for our club! Glen Toepfer

Field Trip Report:

Kealy would like to invite Clubmembers to take a Field Trip to one of the Rock & Gem Shows listed below. When you do attend a show, event or visit a site that would be of interest to our members send her a short report on it. If you have ideas for any future Field Trips this year or next contact Kealy Goodale at Kealygoodale@gmail.com or give her a call at 419-202-4549.

Access to the Botanical Gardens

With the hours of daylight growing shorter, the Main Entrance to the Garden will be closed at some point after sunset. Club members should plan to use the Olympia Drive entrance which is between the main gate and the Education Center that will remain open to allow members to exit. You may continue to use the parking lot by our Craft Center if space is available or choose to park in the Garden in the lot next to the Toledo Artist Guild. As a reminder, when using the Craft Center the last one out after sunset should close and chain the gate access to our parking area.

Heralding the Holidays in November/December

The Artist Village at the Toledo Botanical Garden Metropark welcomes art shoppers to the annual Heralding the Holidays event, Friday evening, November 29, through Sunday, December 1st. The hours for Heralding the Holidays are Friday 5-9, Saturday 10-5, and Sunday 11-4. Admission is free. Current plans call for TGRC to join the estimated 45 vendors who will provide a shopping bazaar experience. Our members can sign up and offer their creations in the existing Craft Center. We will also look to add new members at this time.

Village resident organizations will be offering artwork and handmade crafts, raffles, demos and silent auctions, demonstrations and opportunities to shop local and support small business. Holiday decorations, Father Christmas, food trucks and carolers will be part of the weekend celebration. Organizations participating include the Garden Club Forum, which will be selling fresh wreaths, decorations, wall hangings and centerpieces, and crafts by the Anthony Wayne Garden Club. Visitors can blow their own glass ornament at the Toledo Area Glass Guild, and sample some of the culinary offerings at the Herb Society's table of vinegars and jellies, cookbooks and culinary blends. The Toledo Area Weavers Guild, Toledo Gem and Rockhounds Club, and the Stained Glass Guild will offer handcrafted gift items, as will Branching Out fiber studio. The Toledo Potters Guild will feature work by 14 ceramic artists. Hands On teaching studio will feature artwork by area studio artists who offer classes there, and gift certificates for our one session workshops. The Unruly Arts Gallery will be open as always, as will the painting gallery of the Toledo Artists Club, which also hosts work by area crafters. The Photo Arts club will have a photo booth available, along with prints and framed art photography.

Contact Cathy Clevenz if you are interested in participating in this event.

The Midwest Federation Of Mineralogical and Geological Society

The next MWF Executive Committee Meeting, hosted by Indian Mounds Gem & Mineral Club of Wyoming, Michigan, is set for April 11th 2020. The 2020 MWF Convention will be hosted by the Livingston Mineral Society in Howell, Michigan. If you would like to see the monthly newsletter of the MWF check out the MWF webpage at <http://www.amfed.org/mwf/convention/convention.html>

The 2019 Toledo Gem and Rockhound Show.

The 48th Annual Toledo Gem and Rockhound Show at the Stranahan Convention Center was a great success. Steve provided a written report on the show that generated total revenue of \$10,648.40.

Steve Shimatzki and Suzanna thanked all of the volunteers who showed up to help with loading, set-up, staff tables and provide demos and tear down on the final day. Special thanks go out to those who provided food and refreshments prior to the opening of the Show.

This year we divided the Raffle into two categories: Jewelry and Geologic. Members and Vendors provided a significant increase in the number of items donated to the Raffle to support the Geology programs at Bowling Green State and the University of Toledo. A total of \$1,414.00 was raised which, divided equally, means that each University will receive \$707.00. If any member can help Linda to deliver raffle prizes we would invite you to select those items that you can to deliver in the coming weeks.

2019 Fall Open House Show and Sale:



The TGRC Fall Open House Show and Sale is scheduled for the weekend of November 2nd and 3rd and will once again be held at St. James Lutheran Church on W. Sylvania Avenue in Toledo, Ohio. The hours will be from 9-5pm on Saturday and 11-4pm Sunday. As of this writing there are six members signed up for table areas and are looking forward to additional sign ups. In addition, we are looking for members who are interested in conducting a lapidary related workshop or demonstration in addition to the scheduled the Gem Tree Table during this show. In addition to the digital microscope display the ever-popular Pebble Pit will be set up for our Junior Rockhounds. Food and refreshments will be offered to members and the public on both Saturday and Sunday.

The gym at St James Church has space and tables for 14+ members to set up table areas for display. Assignments are made on a first come first serve basis. All areas will be reserved for members only until October 1st when we will open table reservations to outside individuals. The cost for tables has been adjusted to account for size. Eight-foot tables will be provided for \$20 each and six-foot tables \$15. Members should provide their own table coverings and fixtures. Those members who wish to reserve tables should contact Tom Barnhizer via email, text message or phone as soon as possible with the number and size of tables and if power will be required.

We ask our members to help us to organize the broadest public information campaign for this Falls Open House. See the attached Flyer.

SUNSHINE: Thanks to Peggy Argabright for stepping up to fill the position of Sunshine Chair. Peggy will need all of our help in identifying significant events such as births and birthdays, marriages, anniversaries and passing's that are related to our membership. Call Peggy or send your information to ptoepher@yahoo.com

Help Needed to Ready the New Craft Center.

The club is asking for volunteers to help move items from the storage shed to our new building on Saturday October 26th and/ 27th starting at approximately 10 am and ending at approximately 2 pm. The storage unit needs to be empty by the end of October. For additional information, please contact Glen Toepfer @ 419.460.0845. Thank you in advance!



GEMCRAFTERS OCTOBER UPDATES:

Open work sessions: Note the revised holiday schedules.

Mondays: November 4, 11, 18 and 25 from noon to four

Wednesdays: November 6 and 13 from 6 to 9 pm. with Chet King moderating.

Thursdays: November 7, 14 and 21 from noon to 4pm, with Chet King moderating.

Saturdays; November 16 and 30 from 10 to 4 pm .with Joanna Toepfer moderating.

The November Cab of the Month is **Brazilian Agate**,



Typical Brazilian Agate Cabbochons

Gem Crafter Moderators: Joanna is hoping to invite members to attend a Moderator Training Course in the coming months. We recently trained a new gem crafter moderator, Will Miniard. He is going to offer a gem crafter work session each Monday from noon to four pm. Should any member be interested in becoming a Moderator please contact Joanna Toepfer joanna@cqasolutions.co .

FACETERS:

Faceting Gemstones can seem like a challenge, however, it is a skill that can be learned by carefully following some basic steps. Chet King has openings for members to sign up for his hands-on weekend faceting classes in the Craft Center. If you don't have your own Faceting Machine the Club will provide one for you to use. Classes are held on the 2nd and 4th weekends of each month beginning each day at 10 am through 4 pm.

SOCIAL ROCK GROUP:

This Group meets on the 2nd and 4th Mondays of each month from 6:30 – 8:30 pm at a location of their choosing. In November that will be on the 11th and 25th of the month. The Rockhound Group will identify specimens and discuss other issues such as handling and storing of specimens, proper labeling and various methods to display collections. They will exchange information on prospecting, identifying and collecting rocks, minerals, meteorites and fossils for the benefit of the club's members.

In addition, Group members may trade/swap rock and mineral specimens among themselves, including common rocks, fossils, metallic ores, gems, meteorites and semi-precious stones

METAL CRAFTERS

Metal crafters will meet on Wednesdays, Nov 6 and 13 from 6 to 9 pm. See the figures below for examples of the bracelets that members can make with the rolling mill and three-dimensional copper pieces made from the hydraulic press. I will have the plates and impression dies and can work with members on each piece of equipment. In this case, the skill levels are basic. No need to have made a pendant to use the rolling mill or hydraulic press. Just come



Beginning Metal Craft Training can be arranged by contacting Michelle. She is also seeking suggestions for design ideas about the future metal crafting area at our new location. Email or text your thoughts to Mgrigoretgrh@gmail.com, or give her a call at 419-270-7507.

TRGC FUTURE ROCKHOUNDS OF AMERICA:

Our Last meeting on September 28th we learned more about caves around the world and why they are so important to many regional eco-systems. We will also began working on creating Shell pendants and Bracelets for the holiday season.

The FRA Club meets in the TGRC Craft Center on the 4th Saturday of each month from 2-4 pm accompanied by a parent or guardian. Due to the holiday season we will not meet in November and December except for the Open House. For those of you with access to the internet you may want to visit the following websites for fun activities to keep you busy until January:

<http://geosurvey.ohiodnr.gov/major-topics/rock-identification>

We are growing and are now up to 15 youth members involved in the Future Rockhounds. If you have a friend that is interested in collecting rocks and minerals have them come along with a parent to see what it's all about.

BEADERS:

TGRC Beaders will meet on the third Monday of the Month at 6PM. The Beaders Group is also putting together Gem Tree Kits for the Open Houses and future projects. In addition, Nancy says that she will have materials for you to make your own Shark Tooth necklace. If you are interested in beading, contact Nancy Grove nancy7536@att.net for more information.

ADVANCED BEADERS:

The "Extreme" or Advanced Beaders meet on Tuesdays beginning 9 AM to 4 PM. Participants should be able to work independently on their own projects. If you would like to join, but need more information, contact Kathy Petersen mlrlyt@AOL.com or Shirley Stieb at [sstieb828@gmail.com](mailto:ssstieb828@gmail.com).

November Events and Regional Shows

Here is a partial list from the Midwest Federation events page.

1-3: CLEVELAND, OH Micromineral Society of the Cleveland Museum of Natural History Symposium. Fri 3 - 10 pm; Sat 9 am - 5 pm; Sun 9:30 am - 3 pm. Cleveland Museum of Natural History, 1 Wade Oval, Univ. Circle, Cleveland. Contact: Janet Clifford, janet15clifford@gmail.com

2: TAYLOR, MI Midwest Mineralogical & Lapidary Society Rock Swap. Sales tables 6 pm; Oral auction 7 pm. Democratic Club of Taylor, 23400 Wick Rd., Taylor. Contact: Dwayne Ferguson, (313) 550-9809, shelby0671111@yahoo.com www.mmls.us

2-3: MIDLAND, MI Mid Michigan Rock Club Annual Show. 10 am - 5 pm. Chippewa Nature Center, 400 S. Badour Rd., Midland. Contact: Debra Young, (989) 245-0343; debiyoung50@yahoo.com www.midmichrockclub.com

11: BLOOMFIELD HILLS, MI Michigan Mineralogical Society Annual Auction. Cranbrook Institute of Science, 39221 Woodward Ave, Bloomfield Hills. Contact: Brad Zylman, (612) 600-9484; www.michmin.org

TGRC Meeting Minutes – October 16, 2019 (as transcribed from audio file).

Pledge to the flag

Secretary's Report –

Treasurer's Report – Copies distributed and Read; Motion to accept Report by Tom Marok 2nd by Steve Shimatzki Motion Passed by acclamation.

Business:

1. September Show Report – Steve: Provided certs to individuals.
 - a. Sincere thanks to all of the Volunteers.
 - b. Steve provided a written report on the show that generated total revenue of \$10,648.40.*
Members and Vendors provided a significant increase in the number of items donated to the Raffle to support the Geology programs at Bowling Green State and the University of Toledo. A total of \$1414.00 was raised which, divided equally, means that \$707.00 will be given to each University.

Nuggets



**Mom! I found another
rock for you!**

Need more volunteers in the future that will need to be scheduled. Need more entre's and a bit less soft drinks (which we will use for open house).

2. Nominees – “Tell us about yourself”

President – Holly Smith

V President – Peggy A.

Secretary – Gerry Herr

Treasurer – Glen Toepfer

Board members – Michelle Gregorie (for Meg) Angie Williams

SAA – Todd Goodale

3. November Open House – Tom

All Tables Taken – Michelle will work Membership on Sat. Steve on Sun.

4. Heralding the Holidays – Catherine

Tables in Craft Center with tents available adjacent to CC.

5. Moving Committee – Update on new clubhouse progress. – Joanna

Gen Mtgs after the 1st are to be conducted at a new location TBD.

Group Reports:

Beaders – Nancy Reg mtg on Monday - go into Hibernation in November.

Extreme Beaders – Kathy or Shirley – Mtg tues 9-4pm Bring own proj.

Faceteer's – Chet Elie – Class was attended by 5 members on Sat/Sun.

FRA - Juniors – Tom -

Gem Crafters – Joanna – Working on new building – Training new moderators – scheduling new classes soon.

Metal Crafter's – Michelle – Continue to meet on Weds. Surveying members for best time for sessions.

Sunshine – N/A

Show – See above.

Moving Cmte – Increased area in new building to 3,500 sqft. for \$10,200/yr

Joanna Toepfer presented a diagram which showed the “proposed” layout of the space. Designated work areas are planned to assure that multiple crafters can work at the same time. A welcome area is planned along with an ADA bathroom will be available. A designated Saw Room with ventilation is planned. A common area is planned for classes and workshops. A lot of work needs to be done quickly once the layout is approved. Looking for volunteers with skill in masonry, electrical, plumping, painting and carpentry. We are limited in the size of meetings that can be accommodated in the space available. Monthly meetings may need to be moved

to a new venue. We will use anything that can be moved from the existing CC however we welcome donations of materials and fixtures that can be incorporated into the plan.

Old bus.

Raffle prizes still outstanding.

November General Auction: Looking for donated items

Need volunteers for work party Sat 10-2pm to move buckets and machines to new building.

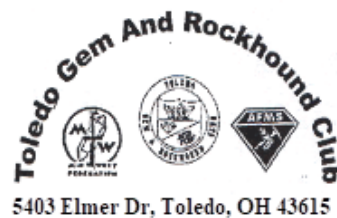
Make sure that you have submitted a membership form.

Put Tri-fold in the Nov RR.

End meeting by 8:30pm

For a full calendar of events and activities visit the "Events Page" of the Toledo Gem & Rockhound Club web-site at <http://www.rockyreader.com/Home/Events> and use the arrow pad to select the month. A copy of the most current calendar is provided below and Printed calendars will be available in the craft center and distributed at monthly meetings.

On Facebook? So is the club along with postings from members and lots of pictures! Please, comment, post your own photos and "LIKE" us! <https://www.facebook.com/ToledoRockhounds>



EDITOR - ROCKY READER

Tom Barnhizer

Superscouts258@gmail.com

(419) 381-4418



TOLEDO GEM & ROCKHOUND CLUB'S FALL OPEN HOUSE SHOW & SALE

NOVEMBER 2ND-3RD, 2019

Saturday 9 am - 5 pm

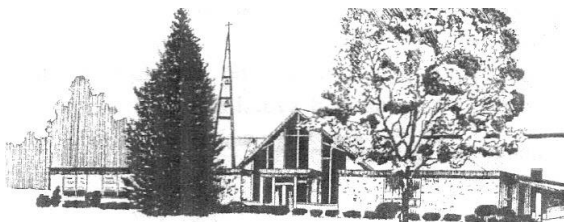
Sunday 11 am - 4 pm

Handcrafted Treasures of the Natural World

Over millions of years the elements that make up the surface of our world have formed into rocks and minerals of great natural beauty that when combined with the skill of a stone crafter or Lapidary artist are transformed into precious and semi-precious gems and items of jewelry, many mounted in handcrafted Silver, that you will enjoy for years to come.

Interested in Collecting?

Millions of young and old have joined the ranks of amateur rockhounds. They enjoy collecting rare rocks, minerals and fossils that offer an endless variety of shape and color. 100's of natural, slabbed or polished specimens will be offered to help you get started or fill a gap in your own collection or serve as a featured item in your homes decor.



Rock & Gem Open House
St James Lutheran Church
4727 W Sylvania Ave, Toledo, OH
43623

Handcrafted
Precious & Semi-
precious Jewelry

Intricate Handmade
Beaded Treasures

Make-it-and Take-It:
Gem Trees, Bead
Bracelets, & More...

Geode's, Agates,
Crystals & Gems

Ancient Marine

Fossils, Petrified
Dinosaur bone,
Trees & Plants

TOLEDO GEM &
ROCKHOUND CLUB
5403 Elmer Drive
Toledo, OH 43615

<http://rockyreader.com/>

