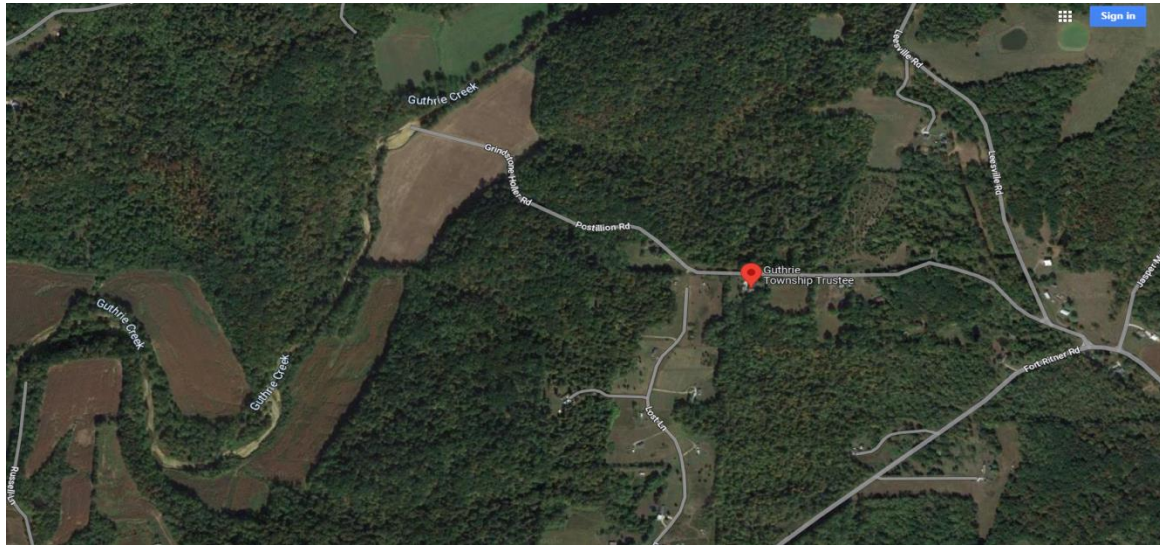


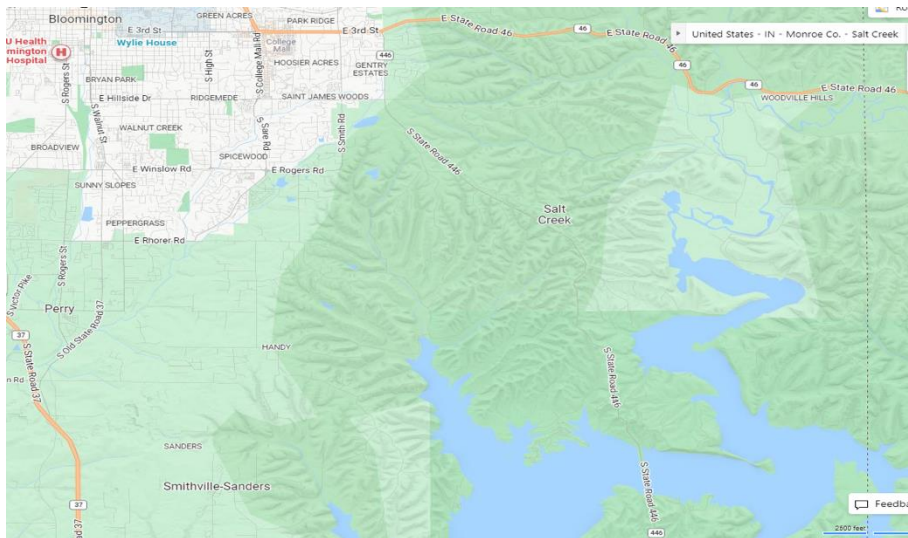
Geode Exploration with Toledo Gem and Rockhounds along with Brown County Rockhounds at Monroe lake\Devils Backbone Indiana Weekend of May 13<sup>th</sup> and 14<sup>th</sup>.

I have read up on a post from [Rock Hounds... - FYRNE LAKE FARMS](#) that talks about some pretty good and large finds from this area. It also looks like a hiking trail or road cuts exist that we can access to the rockhound's sites here.



Here is another area called the same Devil's Backbone and not the area we are visiting [Devil's Backbone, Crawfordsville, Indiana \(hikingproject.com\)](#).

Another area that has geode's and easiest to access is at Monroe lake in the Hoosier National Forest and we will be visiting this site.



Also investigate Indian state museum and history on Geofest they list all the types of geodes that exist in Indiana, should be a fun trip for all!

[GeoFest Gem, Fossil and Mineral Show Returns to Indiana State Museum - Indiana State Museum \(indianamuseum.org\)](http://indianamuseum.org)

What our trip is going to look like?

Arrive on Friday in Bloomington Indiana or meet Saturday Morning for Breakfast at 10am and meet the Brown County rockhound club at Cloverleaf Family Restaurant. [Cloverleaf Restaurant South | Facebook](#)

Meet at north Monroe Lake point by 12:30pm to start first collection point, plenty of restrooms here.

Meet at Hemlock Bluff Nature Preserve north side for collection site #2 and to see an earthquake fault line. Last Restroom break point. Travel Time 30 mins (These details supplied by Brown County Rockhounds Club, Thanks Rhonda Dunn).

Leave and travel to Tunnelton area and possible collection point #3 about 5:30 PM, about 30 travel time, collect till 8pm. We are going down to Postilion Rd to Guthrie Creek.

Meet back at Hemlock Bluff Nature Preserve North Lower parking to convene and make sure everyone has clear direction home or to meet for Dinner.

Route info: (Last stop for snacks will be at intersection of St. Rd. 446 & 50 before we head south.)

The route to our sites from Bloomington will have us go down 446 south to 50 east then to Leesville Rd. South, left on W Base line then South on 1250 W this gets you to Hemlock Lower parking and to E County Rd 200 S. We will take a right, then a quick left to S County Rd 1200 W keep straight on this road it will change into W County Rd 490 S then end at Jasper Mckeaigg Rd we will left and head south to Fort Ritner Rd. Turn left then take fork off to Grindstone Holler Rd this turns into Postillion and ends at Guthrie Creek and last collection point.

Cloverleaf

325 E Winslow Rd

Bloomington, Indiana 47401

Made in Word 97 so if you see blue text hold down Cntrl and click left for a hyperlink (Website).