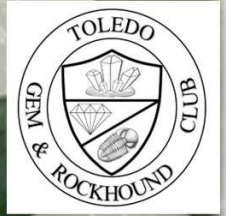


The Rocky Reader



Vol. 62 Issue 2

February 2024

Message from the President

February is here. We are halfway through winter! Soon enough we will be able to go out and do one of our favorite things, be a rockhound and look for rocks for our collection.

The auction at the January meeting was a rousing success. Also at the meeting, we had a discussion about the by-laws for TGRC. They have not been updated since we moved to our current location.

There will be a by-laws meeting on Thursday, February 8th at 6:30pm to make necessary revisions. Anyone is welcome to attend.

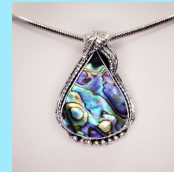
With a heavy heart we remember Lee Floyd who recently passed away. He was a member for nearly twenty years. He worked very hard for the club until health reasons caused him to slow down. Thank you, Floyd, for all you did for TGRC.

Happy Valentine's Day!

Diane Bieber
President

Make Your First Pendant

Sunday
March 3, 2024
11 am – 3 pm



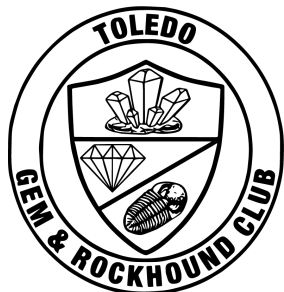
Students will learn how to cut metal, make a bezel and back plate, solder, polish and set a stone. There are two parts to this class; the first three- hour session is scheduled by contacting instructor Michelle Grigore at mgrigoretgrh@gmail.com at least a week before the above date. Members pay \$45, non-members \$55.

All materials provided to complete a small sterling silver pendant with a polished gemstone cabochon.

February Birthstones

- Modern: Amethyst
- Traditional: Amethyst, Hyacinth & Pearl
- Ancient: Amethyst
- Tibetan: Bloodstone
- Indian: Moonstone

If you would like a detailed breakdown, you can check out the following site:
<https://kamayojewelry.com/month-birthstones/birth-month-gemstones-list/>



Rocky Reader

Toledo Gem Rockhound Club 2453

Tremainsville Rd Unit B

Toledo, OH 43613

www.rockyreader.com

2024 Toledo Gem & Rockhound Club Board

President	Diane Bieber	quartz1tgrc@gmail.com
Vice President	Tricia Jackson	teeijackson@gmail.com
Treasurer	Steve Stalker	sstalker@bex.net
Secretary	Charles Campos	ccampos711@yahoo.com
Past President	Joanna Toepfer	jpoanna@cqasolutions.co
Sergeant-at-Arms	Bill Oswald	woswald@buckeye-express.com
Board Member/ Show Chair	Jerri Heer	jheerx6@aol.com
Board Member	Sherm Kardatzke	sakardatzke@gmail.com
Board Member	Mike Cameron	michaelcameron@utoledo.edu
Membership Chair	Michelle Grigore	mgrigoretgrh@gmail.com
Website Editor	Steve Stalker	sstalker@bex.net
Sunshine Chair	Linda Mcconahey	567-277-8283
Newsletter Editor	Erika Teska	editor.rockyreader@gmail.com

We invite members and visitors to join us each month on the 3rd Wednesday of the month at our Toledo Gem and Rockhound Center. 2453 Tremainsville Road Unit B, Toledo OH 43613.

Join us for club updates, auctions, special speakers and presentations



Club Meeting
YOU'RE INVITED

February 21 @7:00 pm
TGRC CRAFT CENTER

2453 Tremainsville Rd
Toledo, OH 43613



Unleash Your Creativity: Exploring the Art of Metal Crafting!

Toledo Gem and Rockhound Club

Hello fellow members of the Toledo Gem and Rockhound club! As we dive into the month of February, we are excited to introduce you to the captivating world of metal crafting. This ancient art form allows us to shape and mold metal into stunning creations that showcase our creativity and passion for all things rocks and minerals.

Metal crafting has a rich history dating back thousands of years, with various techniques and styles developed by different cultures around the world. Today, it is a versatile and vibrant craft that offers endless possibilities for self-expression. Whether you are a seasoned metal crafter or a beginner eager to learn, this article aims to inspire and guide you on your metal crafting journey.



1. Tools and Materials:

To embark on your metal crafting adventure, you will need a few essential tools and materials. These may include a jeweler's saw, files, hammers, pliers, a soldering iron, and various metals such as copper, silver, brass, or even aluminum.

You can find the tools for use at Toledo Gem & Rockhound club. The metals are found with online suppliers such as [Riogrande.com](https://www.riogrande.com)

2. Basic Techniques:

Metal crafting encompasses a wide range of techniques, each offering a unique approach to shaping and manipulating metals. Some popular techniques include:

- *Metal Stamping*: This technique involves using metal stamps to create intricate designs or patterns on metal surfaces. It is a great way to personalize jewelry or decorative items.

- *Wire Wrapping*: By bending and twisting wire, you can create beautiful jewelry pieces or decorative accents. This technique allows for endless creativity and experimentation.

- *Soldering*: Soldering involves joining metal pieces together using a soldering iron and solder. It is an essential skill for creating intricate metal designs

Metal Crafting continued

3. Project Ideas:

Now that you have an idea of the tools and techniques involved in metal crafting, let's explore some exciting project ideas:

- *Customized Jewelry*: Design and create unique earrings, necklaces, bracelets, or rings using your favorite gemstones and metalwork techniques.
- *Lapidary Metalwork*: Combine your love for gemstones with metal crafting by setting polished stones into custom-made pendants, brooches, or keychains.

4. Learning Resources:

If you're eager to explore metal crafting further, there are numerous resources available to help you develop your skills. Consider joining our workshops or classes. Additionally, online tutorials, books, and forums dedicated to metal crafting can provide valuable guidance and inspiration.

Remember, metal crafting is a journey of exploration and self-expression. Don't be afraid to experiment, make mistakes, and let your creativity flow. The Toledo Gem and Rockhound club is a supportive community, so feel free to share your creations, ask questions, and seek advice from fellow members.

We hope this article has sparked your interest in the captivating art of metal crafting. Embrace this wonderful craft and let it take your love for rocks and minerals to new heights. Stay tuned for next month's newsletter featuring Gem Crafters.

Monthly General Meeting:

Mark your calendars because our Annual General Meeting is scheduled for **Wednesday, February 21, starting 7:00 PM** at the Toledo Gem and Rockhound Center. This is your chance to discuss club matters, voice your opinions, and participate in the club's decision-making. We encourage all members to join us!

Connect With Us:

Don't forget to stay connected with us online! Visit our website at **www.rockyreader.com** for the latest updates, resources, and featured articles. You can also follow us on social media to engage with our community, share your own findings, and participate in discussions. If you have any questions or suggestions, please do not hesitate to reach out to us.

Dear members of the Toledo Gem and Rockhound Club,

I hope this message finds you well. I wanted to kindly remind you that the dues for the Toledo Gem and Rockhound Club were due on January 1, 2024.

As a recent update, we have made the decision to align our fiscal year with the calendar year starting in 2024. This change aims to provide a more convenient and streamlined membership experience for everyone involved.

We kindly ask you to update your membership form with the appropriate membership dues that now apply for this calendar year.

By paying your dues promptly, you not only continue to support our fantastic club but also ensure you have access to a wealth of educational resources, exciting events, and the camaraderie of fellow gem and rock enthusiasts.

We sincerely appreciate your commitment to the Toledo Gem and Rockhound Club and look forward to another amazing year of exploring, learning, and sharing our passion for gems and rocks. If you have any questions or need further assistance, please do not hesitate to reach out to our dedicated team.

Thank you for your attention to this matter, and we hope to continue this beautiful journey together.

Warmest regards,

Steve Stalker
Board Treasurer

February 2024

- Rocky Reader
- GEM CRAFTERS
- EXTREME BEADERS
- METAL CRAFTERS

January 2024							February 2024							March 2024						
S	M	T	W	T	F	S	S	M	T	W	T	F	S	S	M	T	W	T	F	S
1	2	3	4	5	6		1	2	3	4	5	6	7	8	9	10	11	12	13	14
7	8	9	10	11	12	13	4	5	6	7	8	9	10	11	12	13	14	15	16	17
14	15	16	17	18	19	20	11	12	13	14	15	16	17	18	19	20	21	22	23	24
21	22	23	24	25	26	27	18	19	20	21	22	23	24	25	26	27	28	29	30	31
28	29	30	31				25	26	27	28	29									

Sunday	Monday	Tuesday	Wednesday	Thursday	Friday	Saturday
28 12:00PM Metal Crafters 12-3 Mike 12:00PM Gem Crafters 12-3 Erika	29 3:00PM Metal Crafters 3-6 Mike	30 10:00AM Extreme Beaders 10am-2pm 12:00PM Metal Crafters 12-3 Mike	31	1 11:00AM Gem Crafters 11-3 Steve 3:30PM Metal Crafters Mike	2 10:00AM Gem crafters 10-3 Sherm	3
4 12:00PM Metal Crafters 12-3 Mike	5	6 10:00AM Extreme Beaders 10am-2pm 1:00PM Metal Crafters 1-4 Michelle	7	8 11:00AM Gem Crafters 11-3 Mike 3:30PM Metal Crafters Mike 6:30PM BY Laws Meeting	9 10:00AM Gem crafters 10-3 Sherm	10
11 12:00PM Metal Crafters 12-3 Michelle 12:00PM Gem Crafters 12-3 Erika	12	13 10:00AM Extreme Beaders 10am-2pm 1:00PM Metal Crafters 1-4 Michelle	14	15 11:00AM Gem Crafters 11-3 Steve 3:30PM Metal Crafters Mike	16 10:00AM Gem crafters 10-3 Sherm	17
18 12:00PM Metal Crafters 12-3 Mike	19	20 10:00AM Extreme Beaders 10am-2pm 1:00PM Metal Crafters 1-4 Michelle	21 7:00PM Monthly Meeting	22 11:00AM Gem Crafters 11-3 Mike 3:30PM Metal Crafters Mike	23 10:00AM Gem crafters 10-3 Sherm	24
25 12:00PM Metal Crafters 12-3 Mike	26	27 10:00AM Extreme Beaders 10am-2pm 1:00PM Metal Crafters 1-4 Michelle	28	29 3:30PM Metal Crafters Mike	1 10:00AM Gem crafters 10-3 Sherm	2

March 2024

- Rocky Reader
- GEM CRAFTERS
- EXTREME BEADERS
- METAL CRAFTERS

February 2024							March 2024							April 2024								
S	M	T	W	T	F	S	S	M	T	W	T	F	S	S	M	T	W	T	F	S		
		1	2	3								1	2		1	2	3	4	5	6		
		4	5	6	7	8	9	10				3	4	5	6	7	8	9	10	11	12	13
		11	12	13	14	15	16	17				10	11	12	13	14	15	16	17	18	19	20
		18	19	20	21	22	23	24				17	18	19	20	21	22	23	24	25	26	27
		25	26	27	28	29						24	25	26	27	28	29	30				
												31										

Sunday	Monday	Tuesday	Wednesday	Thursday	Friday	Saturday
25 12:00PM Metal Crafters 12-3 Mike	26 10:00AM Extreme Beaders 10am-2pm 1:00PM Metal Crafters 1-4 Michelle	27 10:00AM Extreme Beaders 10am-2pm 1:00PM Metal Crafters 1-4 Michelle	28 3:30PM Metal Crafters Mike	29 3:30PM Metal Crafters Mike	1 10:00AM Gem crafters 10-3 Sherm	2
3 11:00AM Make your First Pendant 11-3 pm 12:00PM Metal Crafters 12-3 Mike	4 10:00AM Extreme Beaders 10am-2pm 1:00PM Metal Crafters 1-4 Michelle	5 10:00AM Extreme Beaders 10am-2pm 1:00PM Metal Crafters 1-4 Michelle	6 9:00AM Metal Crafters Mike	7 9:00AM Metal Crafters Mike	8	9
10 12:00PM Metal Crafters 12-3 Mike 12:00PM Gem Crafters 12-3 Erika	11 10:00AM Extreme Beaders 10am-2pm 1:00PM Metal Crafters 1-4 Michelle	12 10:00AM Extreme Beaders 10am-2pm 1:00PM Metal Crafters 1-4 Michelle	13 3:30PM Metal Crafters Mike	14 3:30PM Metal Crafters Mike	15	16
17 12:00PM Metal Crafters 12-3 Mike	18 10:00AM Extreme Beaders 10am-2pm 1:00PM Metal Crafters 1-4 Michelle	19 10:00AM Extreme Beaders 10am-2pm 1:00PM Metal Crafters 1-4 Michelle	20 7:00PM Monthly Meeting	21 3:30PM Metal Crafters Mike	22	23
24 12:00PM Metal Crafters 12-3 Mike 12:00PM Gem Crafters 12-3 Erika	25 10:00AM Extreme Beaders 10am-2pm 1:00PM Metal Crafters 1-4 Michelle	26 10:00AM Extreme Beaders 10am-2pm 1:00PM Metal Crafters 1-4 Michelle	27 3:30PM Metal Crafters Mike	28 3:30PM Metal Crafters Mike	29	30
31	1 10:00AM Extreme Beaders 10am-2pm 1:00PM Metal Crafters 1-4 Michelle	2 10:00AM Extreme Beaders 10am-2pm 1:00PM Metal Crafters 1-4 Michelle	3 3:30PM Metal Crafters Mike	4 3:30PM Metal Crafters Mike	5	6



Toledo Gem and Rockhound Club

Membership type

Individual _____ Grandparent _____

Family _____ Youth _____

2024 Membership RENEWAL FORM (New Members use brochure)

Name (Please print) Last _____ First _____

Spouse (family membership) Last _____ First _____

Any Changes/Updates to information (New email, address, phone, etc?)

Address _____

City _____ **State** _____ **Zip Code** _____

Updated Phone Numbers? _____

Anything else we should update? _____

Email address _____ (to verify we have it correct!)

Membership Category

_____ Individual \$32.33 with tax

_____ Family (living together) \$53.88 with tax

_____ Grandparents \$53.88 with tax

_____ Youth \$16.17 with tax

Payment Type & Amount

Cash _____ \$ _____

Check No _____ \$ _____

Square _____ \$ _____

Today's Date _____/_____/_____

Send Check: Toledo Gem and Rockhound Club, P.O. Box 13268, Toledo OH 43613

Please sign Waiver on the back side!



Toledo Gem and Rockhound Club (TGRC) Waiver and Policy Acknowledgment

IMPORTANT NOTE: We *must* have a **SIGNED** and **DATED** copy of this waiver and acknowledgement on file for you to be a valid member.

TGRC PRIVACY POLICY: *For purposes of planning field trips and other TGRC Social activities, the club will annually distribute a listing of member names, addresses, telephone numbers and email addresses to all club members. The TGRC officers will never knowingly distribute your address information to any other group or organization.*

TGRC WAIVER: *As a condition of membership, and in consideration of any mineral collecting, use of facilities, equipment and other educational opportunities available to me/my family as a club member, I hereby agree to hold the Club and its officers, Directors, committee members and agents harmless, and to indemnify them agist any loss and claims arising from my or my family's participation in Club activities.*

Term of Membership and Dues. TGRC memberships run January 1 to December 31 of each year. *New members joining at the September show will have their dues credited through the end of the following year.* Your membership includes applicable Lucas County, Ohio Sales Tax of 7.75%

Name (Please Print): Last _____ First _____

Signature: _____ **Date** _____

Name of Other Adult Family Member (Print): _____

Their Signature/Date: _____

Names/Ages of Children you are signing as guardian for in family or grandparent memberships:
